

# MOOREBANK PRECINCT EAST STAGE 1 RALP No 1

## PRE-CONSTRUCTION DILAPIDATION REPORT

### MOOREBANK AVENUE GLENFIELD



FOR  
CPB CONTRACTORS PTY LTD  
Level 2 – 177 Pacific Highway North Sydney

Attention: MR. ALAN MASSOUD

Report Date	Surveyed by	Approved	Revision
4/04/2017	V. Godfrey & R. Posadas	Charles Blunt	-



ROONEY & BYE (AUST) PTY LTD  
SUITE 5, LEVEL 3, 31 HUME STREET  
CROWS NEST 2065  
PO BOX 1494, CROWS NEST, 1585  
TEL: (02) 9460 9999  
EMAIL: admin@rooneyandbye.com.au

# Table of Contents

Section	Page
<b>1. General.....</b>	<b>3</b>
1.1 Purpose .....	3
1.2 Description of cracks.....	3
<b>2. Methodology.....</b>	<b>3</b>
<b>3. Survey Findings .....</b>	<b>4 – 6</b>
<b>4. Sketch.....</b>	<b>7</b>
<b>5. Photographs.....</b>	<b>8</b>



## **1. GENERAL**

### **1.1 General**

Rooney & Bye (Aust) Pty Ltd was commissioned by CPB Contractors Pty Ltd to carry out a Pre-Construction Dilapidation Survey of 850M of Moorebank Avenue Roadway at Glenfield.

**See Sketch SK 1 for location of area surveyed.**

Rooney & Bye (Aust) Pty Ltd are civil and structural engineers, and the survey was carried out by the staff of Rooney & Bye (Aust) Pty Ltd. under the directions of Mr Charles Blunt *F.I.E. (Aust)*.

For the purpose of this report, Moorebank Avenue has been orientated north to south.

### **1.2 Description of Cracks**

Description of cracks in this report is in general accordance with AS 2870-2011 Appendix C. "Standard"

• Table C1-Classification of damage with reference to walls:	
Approximate width only	Hairline Cracks < 0.1 mm Fine Cracks < 1.0 mm Noticeable Cracks < 5.0 mm
• Table C2-Classification of damage with reference to concrete floors:	
Approximate width only	Hairline Cracks < 0.3 mm Fine Cracks < 1.0 mm Distinct Cracks < 2.0 mm
All measurements are approximate only.	

## **2. METHODOLOGY**

This report records the cracks etc found at the time of the site visit. The items, detailed in the report, are not an exhaustive list of all the cracks & defects or complete photographic record of the Roadway. It is our intention to record some of the cracks and other defects to show the general condition of the Roadway prior to construction works commencing.

This report is confined solely to the visual inspection of those parts of the Roadway to which reasonable and safe access was available or permitted at the time of survey. Nothing contained in this Report implies that any inaccessible or partly inaccessible area(s) or section(s) of the property being surveyed by the consultants' the date of the survey does not have any defect(s). Therefore, this Report is not a guarantee that a Roadway related defect does not exist in any accessible area(s) or section(s) of the property.

This report has been prepared for the particular project described and no responsibility is accepted for the use of any part of this report in any other context or for any other purpose. We have used a degree of care, skill and diligence normally exercised by consulting engineers in similar circumstances and projects. No other warranty expressed or implied is made or intended. Copyright in this report is the property of Rooney & Bye (Aust) Pty Ltd. The report shall not be reproduced except in full and with the written permission of Rooney & Bye (Aust) Pty Ltd

The weather at the time of the survey was fine.

## **SECTION 3 - SURVEY FINDINGS**

### **INDEX**

---

#### **3.1 External Survey**

- 3.1.1 MOOREBANK AVENUE – Eastern Side
- 3.1.2 MOOREBANK AVENUE – Western Side

### 3. DILAPIDATION SURVEY FINDINGS

<b>3.1</b>	EXTERNAL SURVEY
<b>3.1.1</b>	MOOREBANK AVENUE – Eastern Side

Survey Date: 29-03-17

Card No. 4298

AREA	LOCATION	DETAILS	PHOTO
Moorebank Avenue – Eastern Side	-	General photo of area facing south	1
Moorebank Avenue – Eastern Side		The survey begins at the corner of the boundary fence shown in Photo 2 walking south to the northern side of the crash barrier and opposite Light Post RG78	2
Moorebank Avenue – Eastern Side		<b>See SK 1 for location of area surveyed</b>	-
Moorebank Avenue – Eastern Side	Pavement, Shoulder/Verge, Kerb & Gutter & Crash Barrier	Photos showing general condition cracks damage and defects	3 - 255
Moorebank Avenue – Eastern Side	Pavement, Shoulder/Verge, & Crash Barrier	Between the northern side of the crash barrier (shown in photo 251) and the northern side of the safety fence over the railway lines (shown in photo 397). Photos showing general condition cracks damage and defects	256 - 403
Moorebank Avenue – Eastern Side	Pavement, Shoulder/Verge, & Fence	Between the northern side of the safety fence over the railway lines and the southern side of the safety fence over the railway lines (shown in photo 489). Photos showing general condition cracks damage and defects	404 - 490
Moorebank Avenue – Eastern Side	Pavement, Shoulder/Verge, Kerb & Gutter & Crash Barrier	Between the southern side of the safety fence over the railway lines and opposite the street light post RG 78 (shown in photo 779). Photos showing general condition cracks damage and defects	491 - 789

### 3. DILAPIDATION SURVEY FINDINGS

<b>3.1</b>	EXTERNAL SURVEY
<b>3.1.2</b>	MOOREBANK AVENUE – Western Side

Survey Date: 29-03-17

Card No. 4306

AREA	LOCATION	DETAILS	PHOTO
Moorebank Avenue – Western Side	-	General photo of area facing south	1
Moorebank Avenue – Western Side		The survey begins at the Light Post RG 68 shown in Photo 2 walking south to the northern side of the crash barrier	2
Moorebank Avenue – Western Side		<b>See SK 1 for location of area surveyed</b>	-
Moorebank Avenue – Western Side	Pavement, Shoulder/Verge, & Fence	Photos showing general condition cracks damage and defects	3 - 246
Moorebank Avenue – Western Side	Pavement, Shoulder/Verge, & Crash Barrier	Between the northern side of the crash barrier (shown in photo 247) and the northern side of the bridge over the railway lines (shown in photo 521). Photos showing general condition cracks damage and defects	247 - 520
Moorebank Avenue – Western Side	Safety fence and Kerb  <b>NOTE</b>	Between the northern side of the bridge over the railway lines and the southern side of the bridge. Photos showing general condition cracks damage and defects For this section of the survey these photos have been taken from the eastern side of the roadway using zoom photography	521 - 554
Moorebank Avenue – Western Side	Pavement, Shoulder/Verge, & Crash Barrier	Between the southern side of the bridge (shown in photo 555) and the Light Post RG 78 (shown in photo 891). Photos showing general condition cracks damage and defects	555 - 905

**4. SKETCH**

SK 1	Sketch showing location of area surveyed on Moorebank Avenue	1

## **5. PHOTOGRAPHS**

The photos of this report may not be in order and / or some photo numbers may not have been used.

The photos are referenced as "Card No." and "Photo No." in the "Property Condition Survey Findings" section of this report.

The photos are catalogued using the "Card No." at the top of each page and then the "Photo No." under each photo.

Moorebank Intermodal Terminal Development – Rail Access Package No. 1  
Dilapidation Survey – Site Plan

:East of Georges River



WESTERN SIDE  
CARD 4306  
PHOTOS 1 TO 905.

850m of 14m wide road and  
bridge over East Hills rail line

6144-1 MOOREBANK AVENUE

EASTERN  
SIDE  
CARD 4298  
PHOTOS 1 TO 789.

SK 1.





DSCN0001







DSCN0003





DSCN0005







DSCN0007





DSCN0009







DSCN0011





DSCN0013







DSCN0015







DSCN0017







DSCN0019







DSCN0021







DSCN0023







DSCN0025







DSCN0027







DSCN0029







DSCN0031







DSCN0033







DSCN0035





DSCN0037







DSCN0039







DSCN0041







DSCN0043







DSCN0045







DSCN0047







DSCN0049







DSCN0051







DSCN0053







DSCN0055







DSCN0057







DSCN0059







DSCN0061







DSCN0063







DSCN0065





DSCN0067







DSCN0069







DSCN0071







DSCN0073







DSCN0075







DSCN0077







DSCN0079







DSCN0081





DSCN0083







DSCN0085





DSCN0087







DSCN0089







DSCN0091







DSCN0093





DSCN0095







DSCN0097







DSCN0099







DSCN0101







DSCN0103







DSCN0105







DSCN0107







DSCN0109







DSCN0111







DSCN0113







DSCN0115







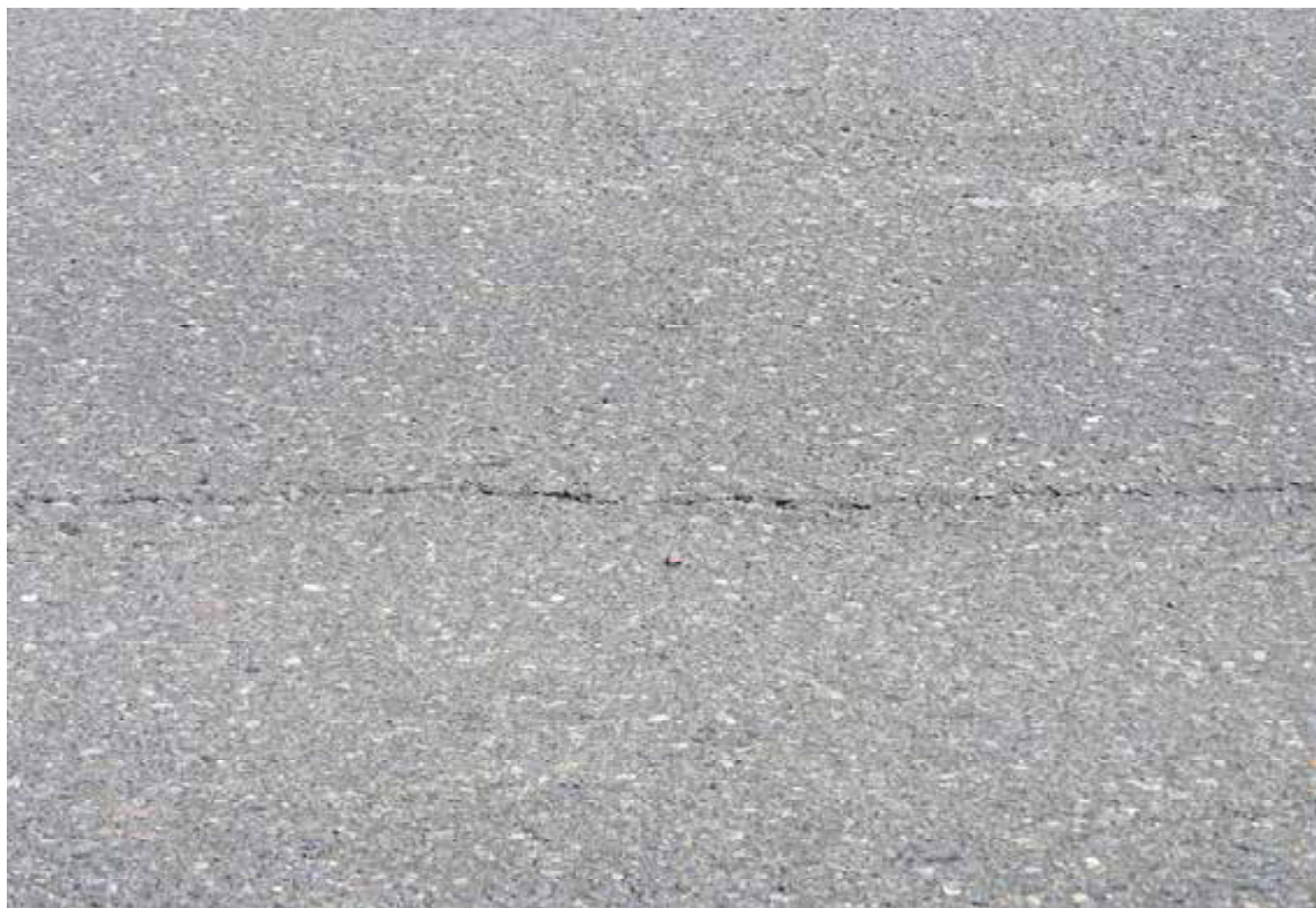
DSCN0117







DSCN0119







DSCN0121







DSCN0123







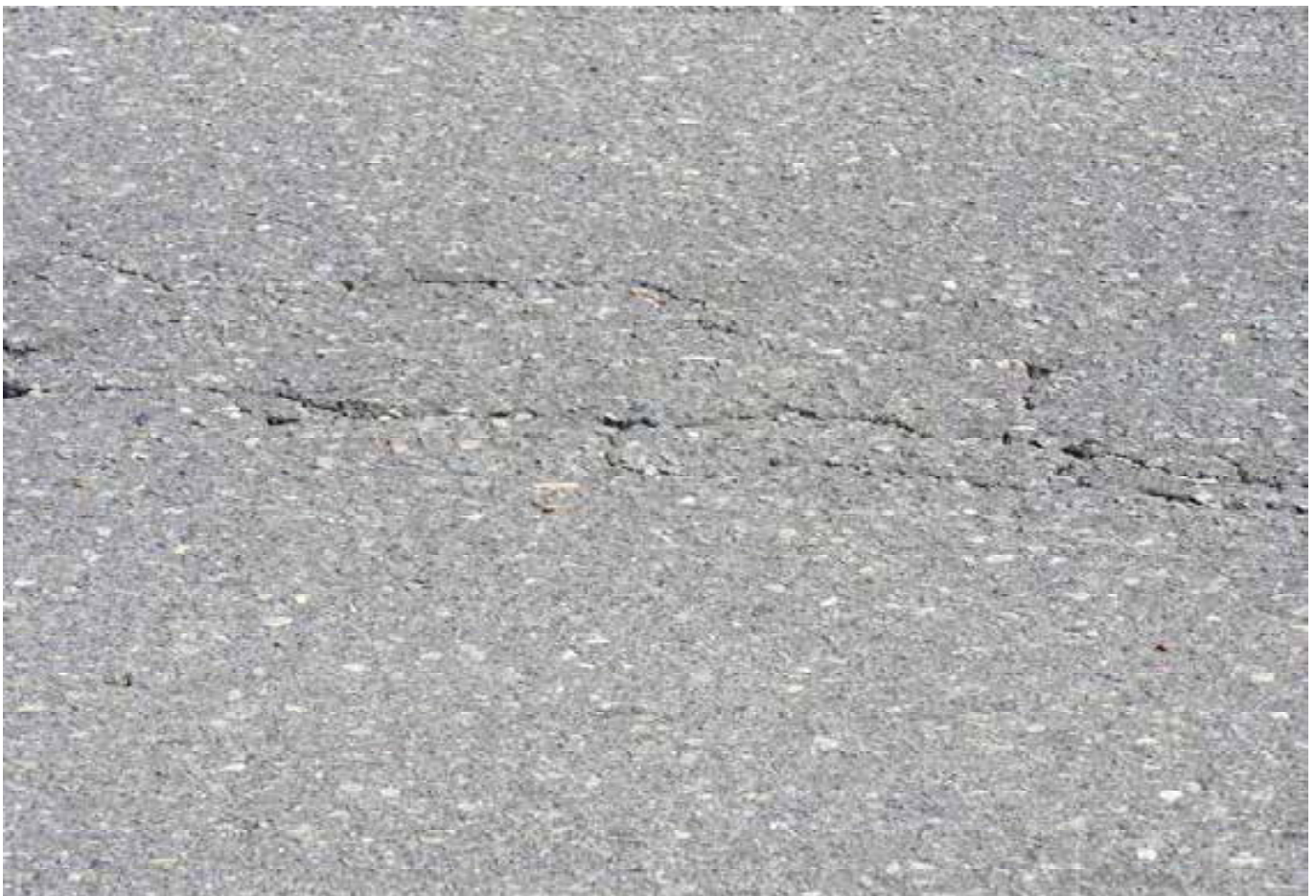
DSCN0125







DSCN0127







DSCN0129







DSCN0131







DSCN0133







DSCN0135







DSCN0137







DSCN0139







DSCN0141







DSCN0143







DSCN0145







DSCN0147







DSCN0149







DSCN0151







DSCN0153







DSCN0155







DSCN0157







DSCN0159







DSCN0161







DSCN0163







DSCN0165







DSCN0167







DSCN0169







DSCN0171







DSCN0173







DSCN0175







DSCN0177







DSCN0179







DSCN0181







DSCN0183







DSCN0185







DSCN0187







DSCN0189







DSCN0191







DSCN0193







DSCN0195







DSCN0197







DSCN0199







DSCN0201







DSCN0203







DSCN0205







DSCN0207







DSCN0209







DSCN0211







DSCN0213







DSCN0215







DSCN0217







DSCN0219







DSCN0221







DSCN0223







DSCN0225







DSCN0227







DSCN0229







DSCN0231







DSCN0233







DSCN0235







DSCN0237







DSCN0239



6144 - 1

DSCN0240





DSCN0241







DSCN0243







DSCN0245







DSCN0247







DSCN0249







DSCN0251







DSCN0253







DSCN0255







DSCN0257







DSCN0259







DSCN0261







DSCN0263







DSCN0265







DSCN0267







DSCN0269







DSCN0271







DSCN0273







DSCN0275







DSCN0277







DSCN0279







DSCN0281







DSCN0283







DSCN0285







DSCN0287







DSCN0289







DSCN0291







DSCN0293







DSCN0295







DSCN0297







DSCN0299







DSCN0301







DSCN0303







DSCN0305



DSCN0306





DSCN0307







DSCN0309







DSCN0311







DSCN0313







DSCN0315







DSCN0317







DSCN0319







DSCN0321







DSCN0323







DSCN0325







DSCN0327







DSCN0329







DSCN0331







DSCN0333







DSCN0335







DSCN0337







DSCN0339



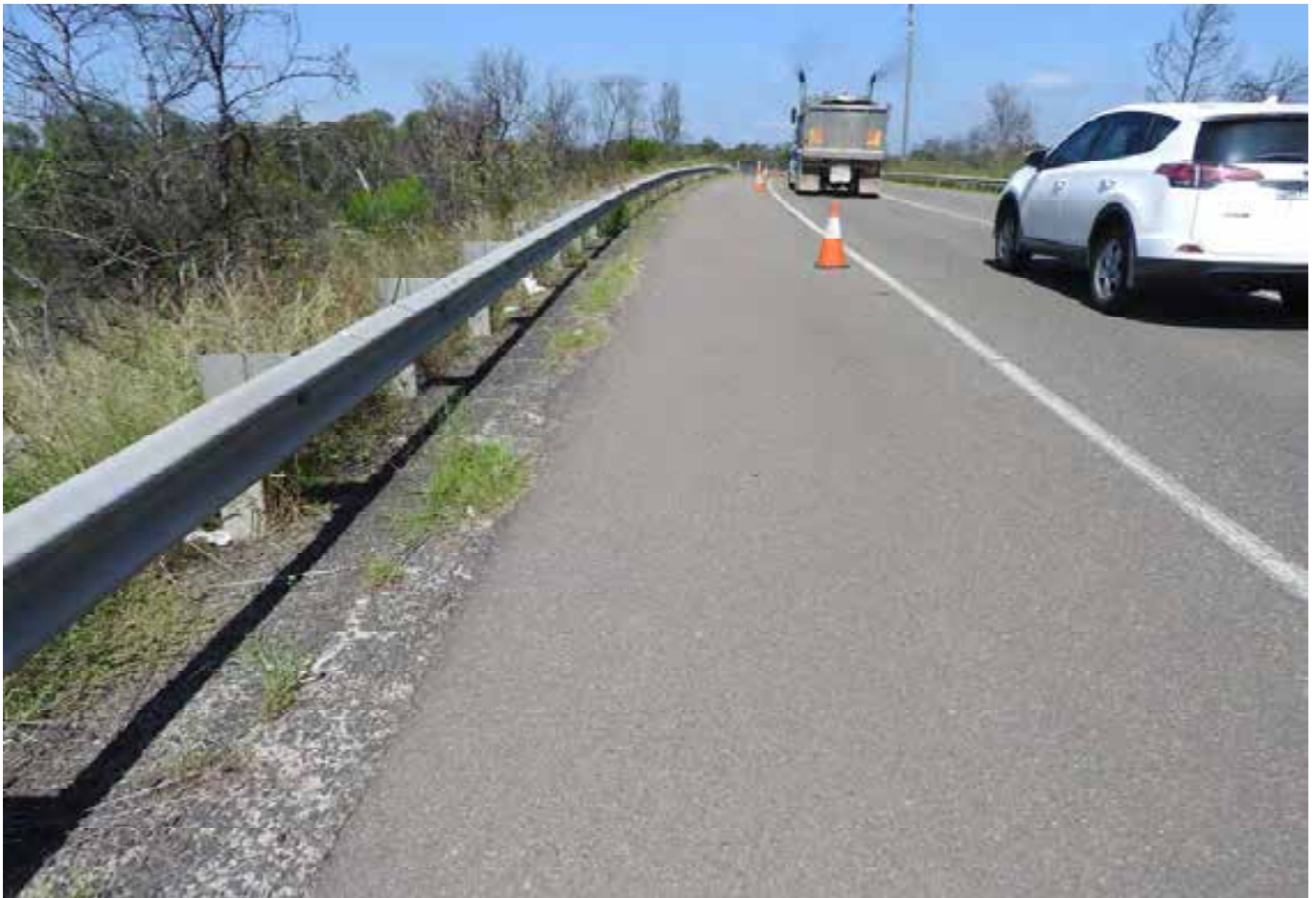




DSCN0341



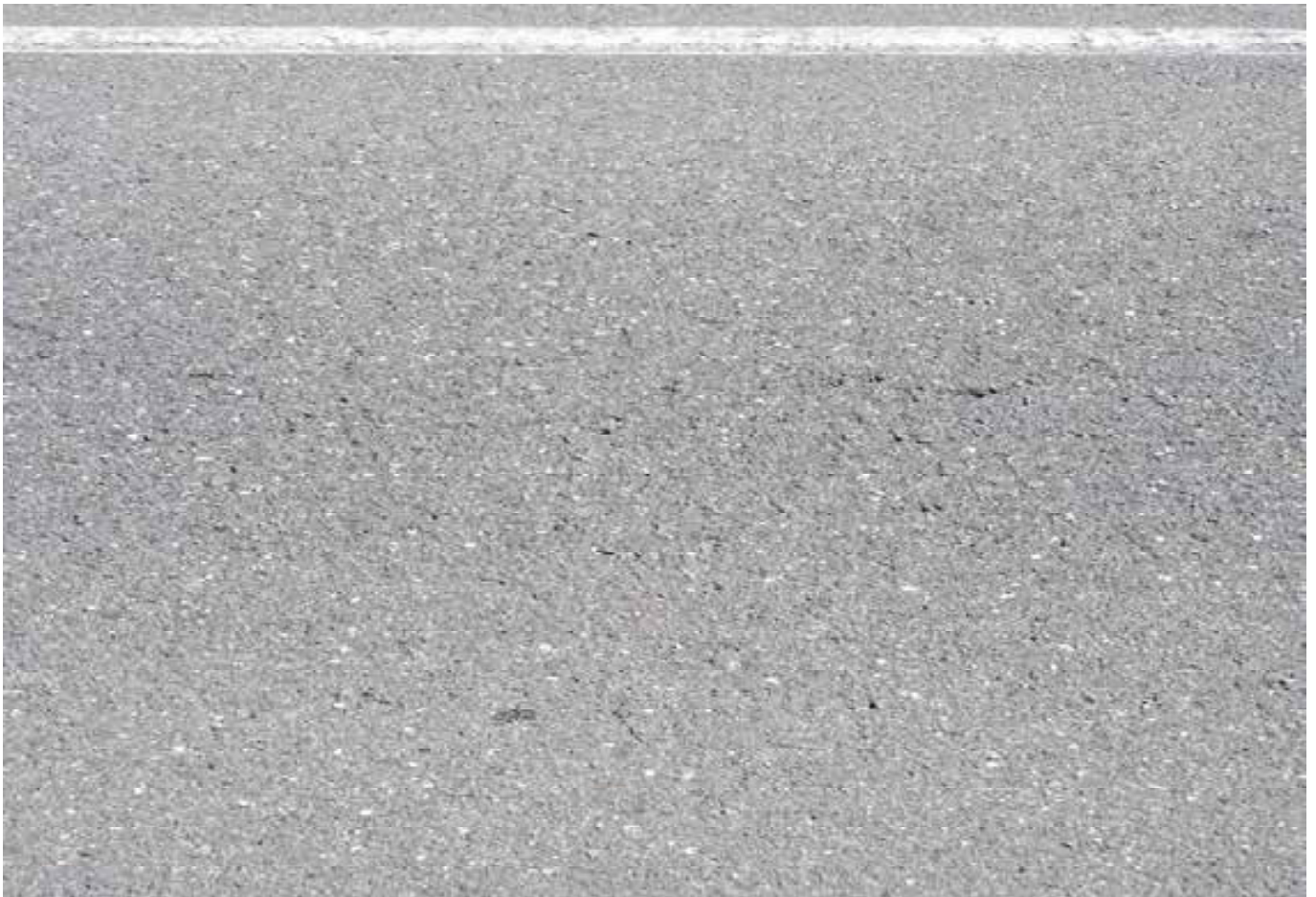




DSCN0343







DSCN0345







DSCN0347







DSCN0349







DSCN0351







DSCN0353







DSCN0355







DSCN0357







DSCN0359







DSCN0361







DSCN0363







DSCN0365







DSCN0367







DSCN0369







DSCN0371







DSCN0373







DSCN0375



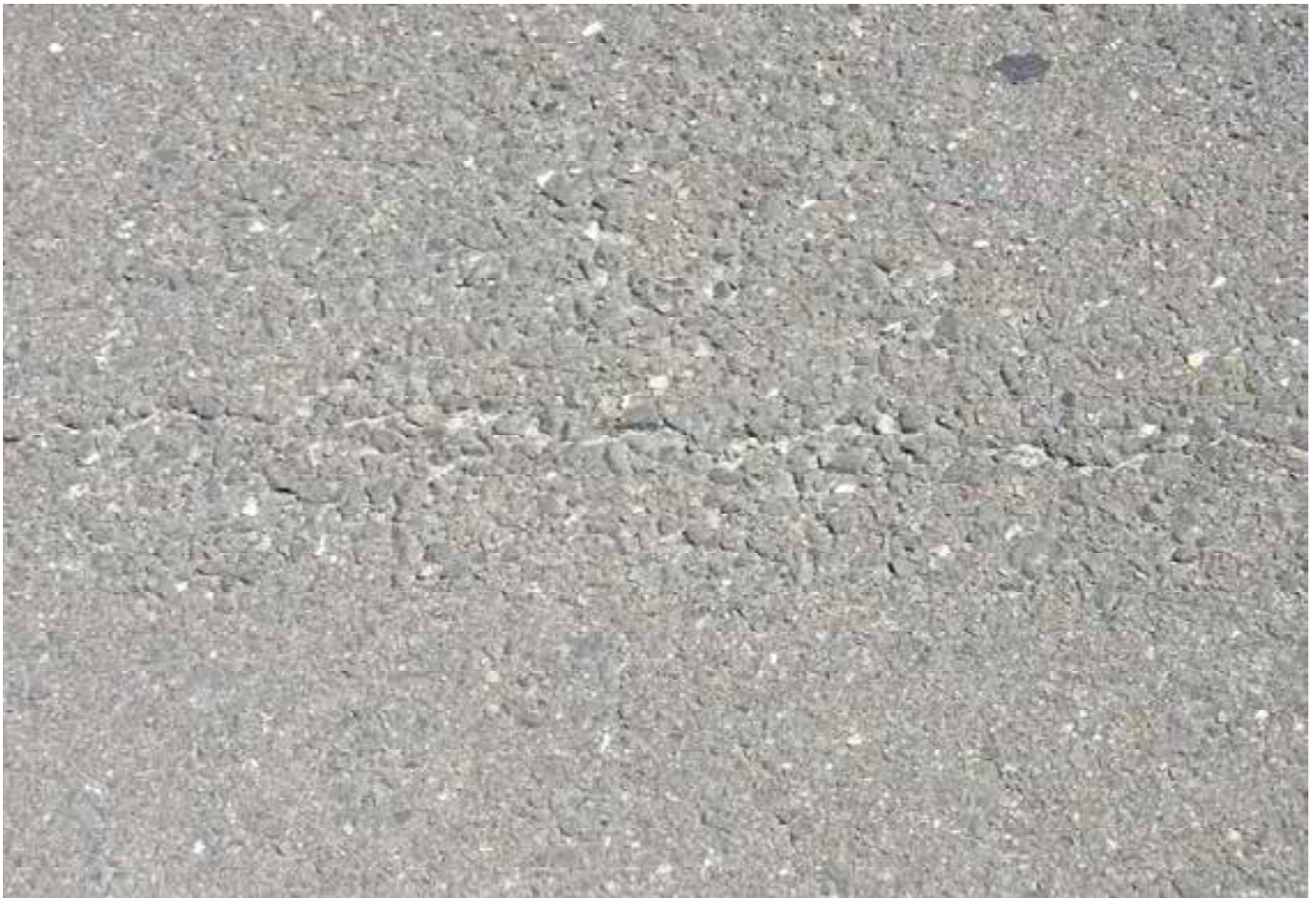




DSCN0377







DSCN0379







DSCN0381







DSCN0383







DSCN0385







DSCN0387







DSCN0389







DSCN0391







DSCN0393







DSCN0395







DSCN0397







DSCN0399







DSCN0401







DSCN0403







DSCN0405







DSCN0407



6144 - 1

DSCN0408





DSCN0409







DSCN0411







DSCN0413



6144 - 1

DSCN0414





DSCN0415







DSCN0417







DSCN0419







DSCN0421







DSCN0423







DSCN0425







DSCN0427







DSCN0430







DSCN0432







DSCN0434







DSCN0436







DSCN0438







DSCN0440







DSCN0442







DSCN0444







DSCN0446







DSCN0448



6144 - 1

DSCN0449





DSCN0450







DSCN0452



DSCN0453





DSCN0454







DSCN0456







DSCN0458







DSCN0460







DSCN0462







DSCN0464







DSCN0466







DSCN0468







DSCN0470







DSCN0472







DSCN0474







DSCN0476







DSCN0478







DSCN0480







DSCN0482







DSCN0484







DSCN0486







DSCN0488







DSCN0490







DSCN0492







DSCN0494







DSCN0496







DSCN0498







DSCN0500







DSCN0502







DSCN0504







DSCN0506







DSCN0508







DSCN0510







DSCN0512







DSCN0514







DSCN0516







DSCN0518







DSCN0520







DSCN0522







DSCN0524







DSCN0526







DSCN0528







DSCN0530







DSCN0532







DSCN0534







DSCN0536







DSCN0538







DSCN0540







DSCN0542







DSCN0544







DSCN0546







DSCN0548







DSCN0550







DSCN0552







DSCN0554







DSCN0556







DSCN0558







DSCN0560







DSCN0562







DSCN0564







DSCN0566







DSCN0568







DSCN0570







DSCN0572







DSCN0574







DSCN0576







DSCN0578







DSCN0580







DSCN0582







DSCN0584







DSCN0586







DSCN0588







DSCN0590







DSCN0592







DSCN0594







DSCN0596







DSCN0598







DSCN0600







DSCN0602







DSCN0604







DSCN0606







DSCN0608







DSCN0610



6144 - 1

DSCN0611





DSCN0612







DSCN0614







DSCN0616







DSCN0618







DSCN0620







DSCN0622







DSCN0624







DSCN0626







DSCN0628







DSCN0630







DSCN0632







DSCN0634







DSCN0636







DSCN0638







DSCN0640







DSCN0642







DSCN0644







DSCN0646







DSCN0648







DSCN0650







DSCN0652







DSCN0654







DSCN0656







DSCN0658







DSCN0660







DSCN0662







DSCN0664







DSCN0666







DSCN0668







DSCN0670







DSCN0672







DSCN0674







DSCN0676







DSCN0678







DSCN0680







DSCN0682







DSCN0684







DSCN0686







DSCN0688







DSCN0690







DSCN0692







DSCN0694







DSCN0696







DSCN0698







DSCN0700







DSCN0702







DSCN0704







DSCN0706







DSCN0708







DSCN0710







DSCN0712







DSCN0714







DSCN0716







DSCN0718







DSCN0720







DSCN0722







DSCN0724







DSCN0726







DSCN0728







DSCN0730







DSCN0732







DSCN0734







DSCN0736







DSCN0738







DSCN0740



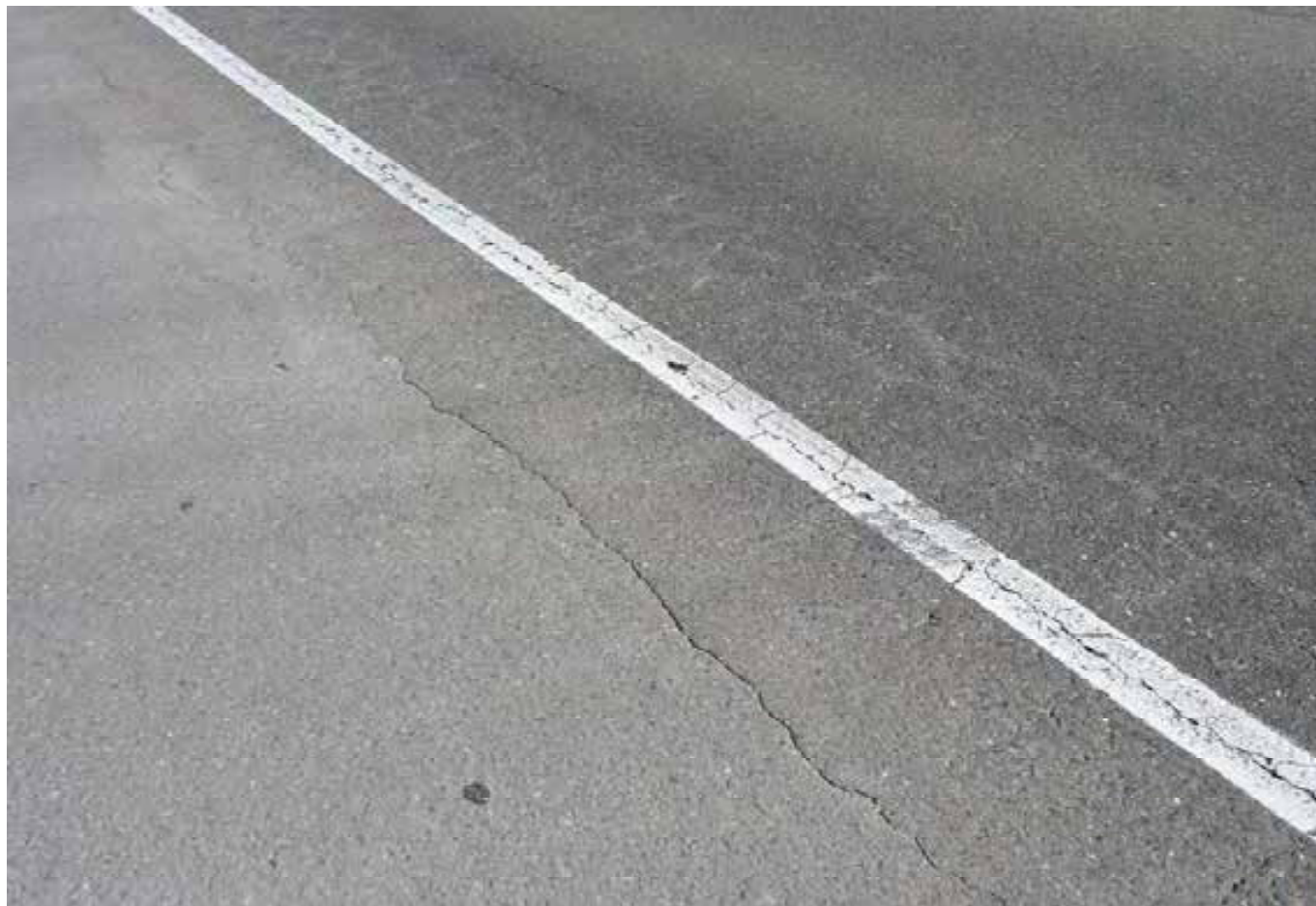




DSCN0742







DSCN0744







DSCN0746







DSCN0748







DSCN0750







DSCN0752







DSCN0754







DSCN0756







DSCN0758







DSCN0760







DSCN0762







DSCN0764







DSCN0766







DSCN0768







DSCN0770







DSCN0772







DSCN0774







DSCN0776







DSCN0778







DSCN0780







DSCN0782







DSCN0784







DSCN0786







DSCN0788







DSCN0001







DSCN0003







DSCN0005







DSCN0007







DSCN0009







DSCN0011







DSCN0013







DSCN0015







DSCN0017







DSCN0019







DSCN0021







DSCN0023







DSCN0025







DSCN0027







DSCN0029







DSCN0031







DSCN0033







DSCN0035







DSCN0037



DSCN0038





DSCN0039







DSCN0041







DSCN0043







DSCN0045







DSCN0047







DSCN0049







DSCN0051







DSCN0053







DSCN0055







DSCN0057







DSCN0059







DSCN0061







DSCN0063







DSCN0065







DSCN0067







DSCN0069







DSCN0071







DSCN0073







DSCN0075



DSCN0076





DSCN0077







DSCN0079







DSCN0081



DSCN0082





DSCN0083







DSCN0085







DSCN0087







DSCN0089







DSCN0091







DSCN0093







DSCN0095







DSCN0097







DSCN0099







DSCN0101







DSCN0103







DSCN0105







DSCN0107







DSCN0109







DSCN0111







DSCN0113







DSCN0115







DSCN0117







DSCN0119







DSCN0121







DSCN0123







DSCN0125







DSCN0127







DSCN0129







DSCN0131







DSCN0133







DSCN0135







DSCN0137







DSCN0139







DSCN0141







DSCN0143







DSCN0145







DSCN0147



DSCN0148





DSCN0149







DSCN0151







DSCN0153







DSCN0155







DSCN0157







DSCN0159







DSCN0161







DSCN0163







DSCN0165







DSCN0167







DSCN0169







DSCN0171







DSCN0173







DSCN0175







DSCN0177







DSCN0179







DSCN0181







DSCN0183







DSCN0185







DSCN0187







DSCN0189







DSCN0191







DSCN0193







DSCN0195







DSCN0197







DSCN0199







DSCN0201







DSCN0203







DSCN0205







DSCN0207







DSCN0209







DSCN0211







DSCN0213



DSCN0214





DSCN0215







DSCN0217







DSCN0219







DSCN0221







DSCN0223







DSCN0225



DSCN0226





DSCN0227







DSCN0229







DSCN0231







DSCN0233







DSCN0235







DSCN0237







DSCN0239







DSCN0241







DSCN0243







DSCN0245







DSCN0247







DSCN0249







DSCN0251







DSCN0253







DSCN0255







DSCN0257







DSCN0259







DSCN0261







DSCN0263







DSCN0265







DSCN0267







DSCN0269







DSCN0271







DSCN0273







DSCN0275







DSCN0277







DSCN0279







DSCN0281







DSCN0283







DSCN0285







DSCN0287







DSCN0289







DSCN0291







DSCN0293







DSCN0295







DSCN0297







DSCN0299







DSCN0301







DSCN0303







DSCN0305







DSCN0307



DSCN0308





DSCN0309







DSCN0311







DSCN0313







DSCN0315







DSCN0317







DSCN0319







DSCN0321







DSCN0323







DSCN0325







DSCN0327







DSCN0329







DSCN0331







DSCN0333







DSCN0335







DSCN0337







DSCN0339







DSCN0341







DSCN0343



DSCN0344





DSCN0345







DSCN0347



DSCN0348





DSCN0349







DSCN0351







DSCN0353







DSCN0355







DSCN0357







DSCN0359







DSCN0361







DSCN0363







DSCN0365







DSCN0367







DSCN0369







DSCN0371







DSCN0373







DSCN0375







DSCN0377







DSCN0379







DSCN0381







DSCN0383







DSCN0385







DSCN0387







DSCN0389







DSCN0391







DSCN0393







DSCN0395







DSCN0397







DSCN0399







DSCN0401







DSCN0403







DSCN0405







DSCN0407







DSCN0409







DSCN0411







DSCN0413







DSCN0415







DSCN0417







DSCN0419







DSCN0421







DSCN0423







DSCN0425



DSCN0426





DSCN0427







DSCN0429







DSCN0431







DSCN0433







DSCN0435







DSCN0437



DSCN0438





DSCN0439







DSCN0441







DSCN0443







DSCN0445



DSCN0446





DSCN0447







DSCN0449







DSCN0451







DSCN0453







DSCN0455







DSCN0457







DSCN0459







DSCN0461







DSCN0463







DSCN0465







DSCN0467







DSCN0469







DSCN0471







DSCN0473







DSCN0475







DSCN0477







DSCN0479







DSCN0481







DSCN0483







DSCN0485







DSCN0487







DSCN0489







DSCN0491







DSCN0493







DSCN0495







DSCN0497







DSCN0499







DSCN0501







DSCN0503







DSCN0505







DSCN0507







DSCN0509







DSCN0511







DSCN0513







DSCN0515







DSCN0517







DSCN0519



DSCN0520





DSCN0521







DSCN0523







DSCN0525



DSCN0526





DSCN0527



DSCN0528





DSCN0529



DSCN0530





DSCN0531







DSCN0533







DSCN0535



DSCN0536





DSCN0537



DSCN0538





DSCN0539



DSCN0540





DSCN0541







DSCN0543







DSCN0545







DSCN0547







DSCN0549







DSCN0551







DSCN0553







DSCN0555







DSCN0557







DSCN0559







DSCN0561







DSCN0563







DSCN0565







DSCN0567







DSCN0569







DSCN0571







DSCN0573







DSCN0575







DSCN0577



DSCN0578





DSCN0579







DSCN0581







DSCN0583







DSCN0585







DSCN0587







DSCN0589







DSCN0591







DSCN0593







DSCN0595







DSCN0597



DSCN0598





DSCN0599







DSCN0601







DSCN0603







DSCN0605



DSCN0606





DSCN0607







DSCN0609







DSCN0611







DSCN0613







DSCN0615







DSCN0617







DSCN0619







DSCN0621







DSCN0623







DSCN0625







DSCN0627







DSCN0629



DSCN0630





DSCN0631







DSCN0633







DSCN0635



DSCN0636





DSCN0637







DSCN0639







DSCN0641







DSCN0643







DSCN0645







DSCN0647







DSCN0649







DSCN0651







DSCN0653







DSCN0655







DSCN0657







DSCN0659







DSCN0661







DSCN0663







DSCN0665







DSCN0667







DSCN0669







DSCN0671







DSCN0673







DSCN0675







DSCN0677







DSCN0679







DSCN0681







DSCN0683







DSCN0685







DSCN0687



DSCN0688





DSCN0689







DSCN0691







DSCN0693







DSCN0695







DSCN0697







DSCN0699







DSCN0701







DSCN0703







DSCN0705







DSCN0707







DSCN0709







DSCN0711







DSCN0713







DSCN0715







DSCN0717







DSCN0719







DSCN0721







DSCN0723



DSCN0724





DSCN0725



DSCN0726





DSCN0727







DSCN0729







DSCN0731



DSCN0732





DSCN0733







DSCN0735







DSCN0737







DSCN0739







DSCN0741







DSCN0743







DSCN0745







DSCN0747







DSCN0749







DSCN0751







DSCN0753







DSCN0755







DSCN0757







DSCN0759



DSCN0760





DSCN0761







DSCN0763







DSCN0765







DSCN0767







DSCN0769







DSCN0771







DSCN0773



DSCN0774





DSCN0775







DSCN0777







DSCN0779



DSCN0780





DSCN0781







DSCN0783







DSCN0785







DSCN0787



DSCN0788





DSCN0789







DSCN0791







DSCN0793







DSCN0795







DSCN0797







DSCN0799







DSCN0801







DSCN0803







DSCN0805







DSCN0807







DSCN0809







DSCN0811







DSCN0813







DSCN0815







DSCN0817







DSCN0819



DSCN0820





DSCN0821







DSCN0823







DSCN0825







DSCN0827







DSCN0829







DSCN0831







DSCN0833







DSCN0835







DSCN0837







DSCN0839







DSCN0841







DSCN0843







DSCN0845







DSCN0847







DSCN0849







DSCN0851







DSCN0853







DSCN0855







DSCN0857







DSCN0859







DSCN0861







DSCN0863







DSCN0865



DSCN0866





DSCN0867







DSCN0869







DSCN0871







DSCN0873







DSCN0875







DSCN0877







DSCN0879







DSCN0881







DSCN0883







DSCN0885







DSCN0887







DSCN0889







DSCN0891







DSCN0893







DSCN0895







DSCN0897







DSCN0899







DSCN0901







DSCN0903







DSCN0905