

MOOREBANK PRECINCT EAST STAGE 1 RALP No 1

PRE-CONSTRUCTION DILAPIDATION REPORT

CAMBRIDGE AVENUE GLENFIELD



FOR
CPB CONTRACTORS PTY LTD
Level 2 – 177 Pacific Highway North Sydney

Attention: MR. ALAN MASSOUD

Report Date	Surveyed by	Approved	Revision
4/04/2017	V. Godfrey & R. Posadas	Charles Blunt	-



ROONEY & BYE (AUST) PTY LTD
SUITE 5, LEVEL 3, 31 HUME STREET
CROWS NEST 2065
PO BOX 1494, CROWS NEST, 1585
TEL: (02) 9460 9999
EMAIL: admin@rooneyandbye.com.au

Table of Contents

Section	Page
1. General.....	3
1.1 Purpose	3
1.2 Description of cracks.....	3
2. Methodology.....	3
3. Survey Findings	4 – 6
4. Sketch.....	7
5. Photographs.....	8

1. GENERAL

1.1 General

Rooney & Bye (Aust) Pty Ltd was commissioned by CPB Contractors Pty Ltd to carry out a Pre-Construction Dilapidation Survey of Cambridge Avenue Roadway at Glenfield.

See Sketch SK 1 for location of area surveyed.

Rooney & Bye (Aust) Pty Ltd are civil and structural engineers, and the survey was carried out by the staff of Rooney & Bye (Aust) Pty Ltd. under the directions of Mr Charles Blunt *F.I.E. (Aust)*.

For the purpose of this report, Cambridge Avenue has been orientated east to west.

1.2 Description of Cracks

Description of cracks in this report is in general accordance with AS 2870-2011 Appendix C. "Standard"

• Table C1-Classification of damage with reference to walls:	
Approximate width only	Hairline Cracks < 0.1 mm Fine Cracks < 1.0 mm Noticeable Cracks < 5.0 mm
• Table C2-Classification of damage with reference to concrete floors:	
Approximate width only	Hairline Cracks < 0.3 mm Fine Cracks < 1.0 mm Distinct Cracks < 2.0 mm
All measurements are approximate only.	

2. METHODOLOGY

This report records the cracks etc found at the time of the site visit. The items, detailed in the report, are not an exhaustive list of all the cracks & defects or complete photographic record of the Roadway. It is our intention to record some of the cracks and other defects to show the general condition of the Roadway prior to construction works commencing.

This report is confined solely to the visual inspection of those parts of the Roadway to which reasonable and safe access was available or permitted at the time of survey. Nothing contained in this Report implies that any inaccessible or partly inaccessible area(s) or section(s) of the property being surveyed by the consultants' the date of the survey does not have any defect(s). Therefore, this Report is not a guarantee that a Roadway related defect does not exist in any accessible area(s) or section(s) of the property.

This report has been prepared for the particular project described and no responsibility is accepted for the use of any part of this report in any other context or for any other purpose. We have used a degree of care, skill and diligence normally exercised by consulting engineers in similar circumstances and projects. No other warranty expressed or implied is made or intended. Copyright in this report is the property of Rooney & Bye (Aust) Pty Ltd. The report shall not be reproduced except in full and with the written permission of Rooney & Bye (Aust) Pty Ltd

The weather at the time of the survey was fine.

SECTION 3 - SURVEY FINDINGS

INDEX

3.1 External Survey

- 3.1.1 CAMBRIDGE AVENUE – Northern Side
- 3.1.2 CAMBRIDGE AVENUE – Southern Side

3. DILAPIDATION SURVEY FINDINGS

3.1	EXTERNAL SURVEY
3.1.1	CAMBRIDGE AVENUE – Northern Side

Survey Date: 31-03-17

Card No. 4331

AREA	LOCATION	DETAILS	PHOTO
Cambridge Avenue – Northern Side	-	General photo of area facing east	1
Cambridge Avenue – Northern Side		The survey begins at the Sign stating “Narrow Causeway Ahead” walking 100M towards the east ending the survey at Light Post 652 464.	-
Cambridge Avenue – Northern Side		See SK 1 for location of area surveyed	-
Cambridge Avenue – Northern Side	Pavement, Shoulder/Verge, Kerb & Gutter	Photos showing general condition cracks damage and defects	2 - 251

3. DILAPIDATION SURVEY FINDINGS

3.1	EXTERNAL SURVEY
3.1.2	CAMBRIDGE AVENUE – Southern Side

Survey Date: 31-03-17

Card No. 4323

AREA	LOCATION	DETAILS	PHOTO
Cambridge Avenue – Southern Side	-	General photo of area facing west	1
Cambridge Avenue – Southern Side		The survey begins at the Glenfield Causeway Sign on the south western side of the Causeway walking west to the City of Campbelltown Sign (shown in photo 464)	-
Cambridge Avenue – Southern Side		See SK 1 for location of area surveyed	-
Cambridge Avenue – Southern Side	Pavement, Shoulder/Verge, Signs and Light Posts	Photos showing general condition cracks damage and defects	2 - 472

4. SKETCH

SK 1	Sketch showing location of area surveyed on Cambridge Avenue	1

5. PHOTOGRAPHS

The photos of this report may not be in order and / or some photo numbers may not have been used.

The photos are referenced as "Card No." and "Photo No." in the "Property Condition Survey Findings" section of this report.

The photos are catalogued using the "Card No." at the top of each page and then the "Photo No." under each photo.

SOUTHERN VERTICAL
FACE OF BRIDGE
CARD 4325
PHOTOS 440 TO 458

SOUTHERN SIDE
CARD 4325
PHOTOS 214 TO 437.



N



N

6144 - 2

CAMBRIDGE AVENUE
AND
CAUSEWAY.

NORTHERN SIDE
CARD 4325
PHOTOS 1 TO 213.

SK 1.



DSCN-001





DSCN-003





DSCN-005





DSCN-007





DSCN-009





DSCN-011





DSCN-013





DSCN-015





DSCN-017





DSCN-019





DSCN-021





DSCN-023





DSCN-025





DSCN-027





DSCN-029





DSCN-031





DSCN-033





DSCN-035





DSCN-037





DSCN-039





DSCN-041





DSCN-043





DSCN-045





DSCN-047





DSCN-049





DSCN-051





DSCN-053





DSCN-055





DSCN-057





DSCN-059





DSCN-061





DSCN-063





DSCN-065





DSCN-067





DSCN-069





DSCN-071





DSCN-073





DSCN-075





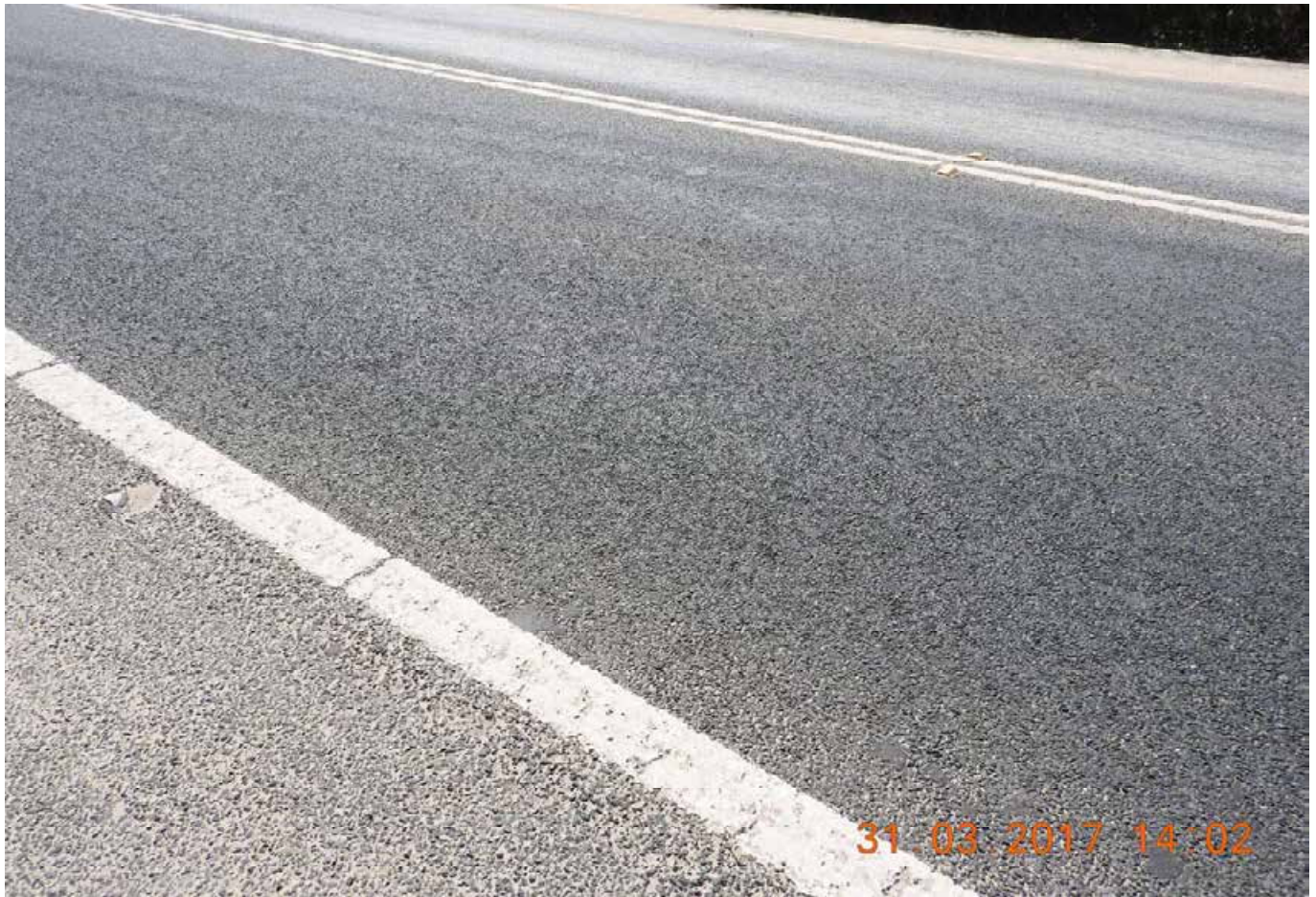
DSCN-077





DSCN-079





DSCN-081





DSCN-083





DSCN-085





DSCN-087





DSCN-089





DSCN-091





DSCN-093





DSCN-095





DSCN-097





DSCN-099





DSCN-101





DSCN-103





DSCN-105





DSCN-107





DSCN-109





DSCN-111





DSCN-113





DSCN-115





DSCN-117



DSCN-118



DSCN-119





DSCN-121



DSCN-122



DSCN-123





DSCN-125





DSCN-127





DSCN-129





DSCN-131



DSCN-132



DSCN-133





DSCN-135





DSCN-137





DSCN-139





DSCN-141





DSCN-143





DSCN-145



DSCN-146



DSCN-147





DSCN-149





DSCN-151





DSCN-153





DSCN-155





DSCN-157





DSCN-159



DSCN-160



DSCN-161





DSCN-163





DSCN-165





DSCN-167





DSCN-169





DSCN-171





DSCN-173





DSCN-175





DSCN-177



DSCN-178



DSCN-179





DSCN-181





DSCN-183



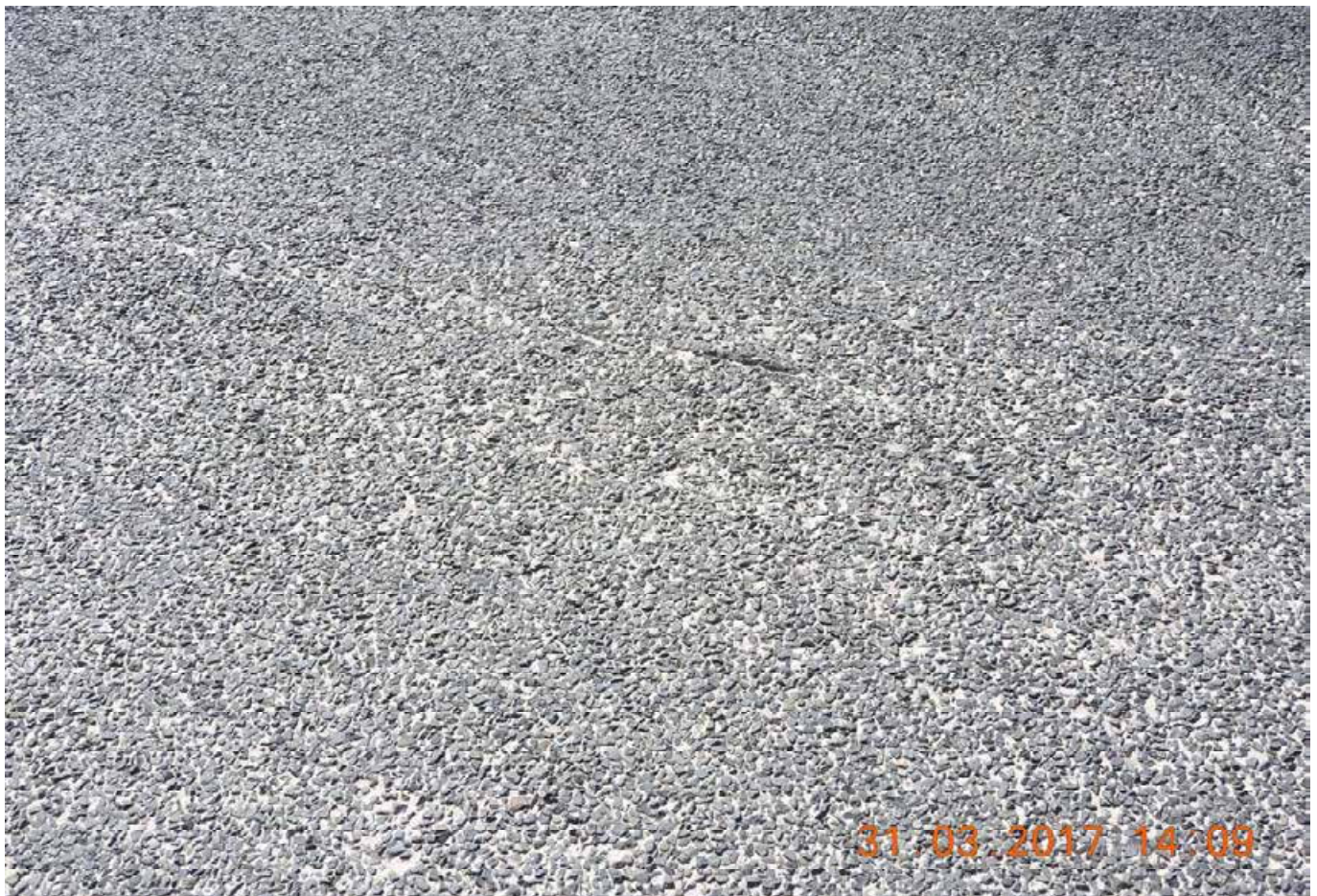


DSCN-185





DSCN-187





DSCN-189





DSCN-191





DSCN-193





DSCN-195





DSCN-197





DSCN-199





DSCN-201





DSCN-203





DSCN-205





DSCN-207





DSCN-209





DSCN-211





DSCN-213





DSCN-215





DSCN-217





DSCN-219



DSCN-220



DSCN-221





DSCN-223



DSCN-224



DSCN-225





DSCN-227





DSCN-229





DSCN-231





DSCN-233





DSCN-235





DSCN-237





DSCN-239





DSCN-241





DSCN-243





DSCN-245





DSCN-247





DSCN-249





DSCN-251





DSCN-253





DSCN-255





DSCN-257





DSCN-259





DSCN-261





DSCN-263





DSCN-265





DSCN-267





DSCN-269





DSCN-271





DSCN-273





DSCN-275





DSCN-277





DSCN-279





DSCN-281





DSCN-283





DSCN-285





DSCN-287





DSCN-289





DSCN-291





DSCN-293





DSCN-295





DSCN-297





DSCN-299





DSCN-301





DSCN-303





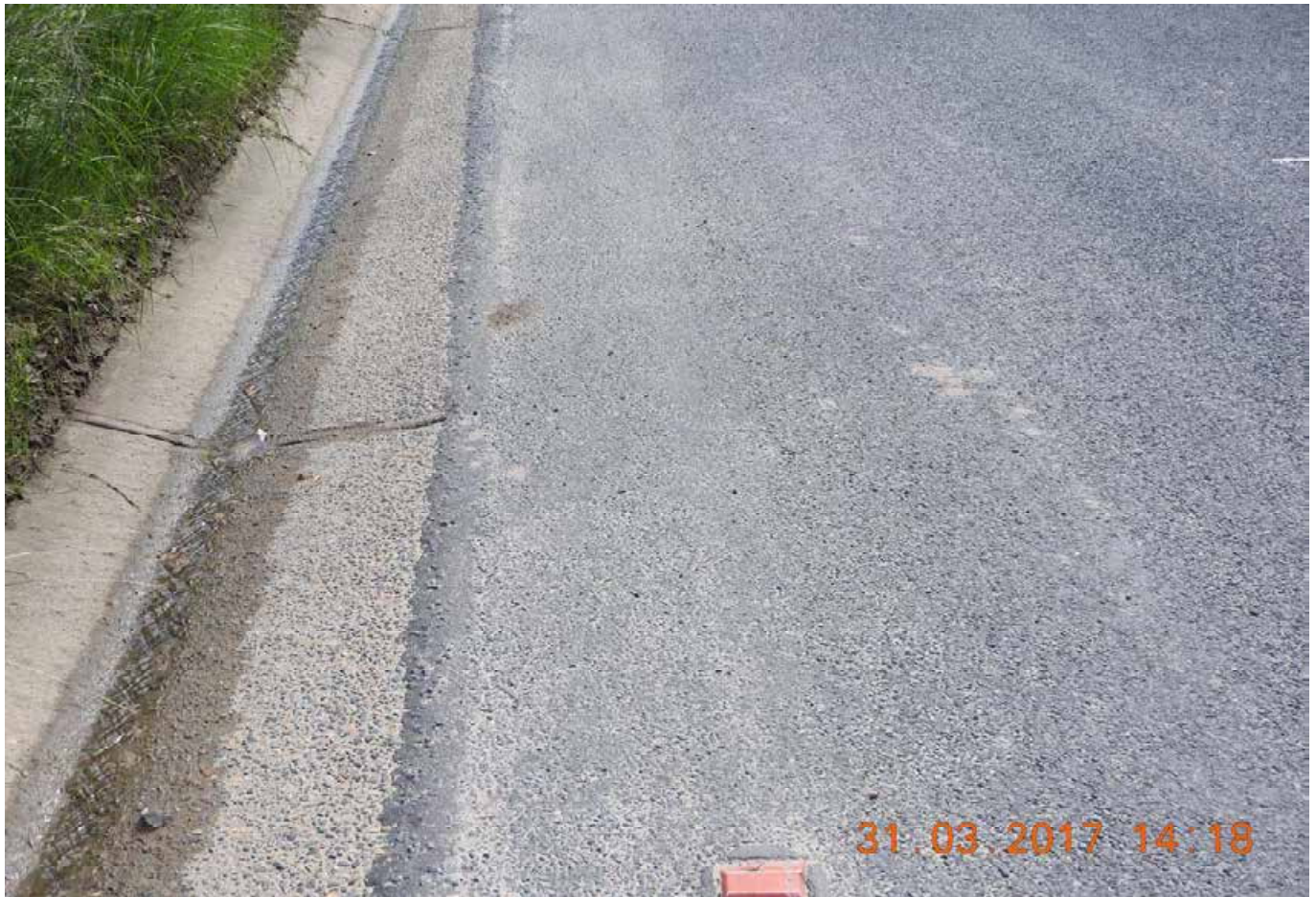
DSCN-305





DSCN-307





DSCN-309



DSCN-310



DSCN-311



DSCN-312



DSCN-313





DSCN-315





DSCN-317





DSCN-319





DSCN-321



DSCN-322



DSCN-323





DSCN-325





DSCN-327





DSCN-329





DSCN-331





DSCN-333





DSCN-335





DSCN-337





DSCN-339





DSCN-341





DSCN-343





DSCN-345



DSCN-346



DSCN-347





DSCN-349





DSCN-351





DSCN-353





DSCN-355





DSCN-357





DSCN-359





DSCN-361





DSCN-363





DSCN-365





DSCN-367





DSCN-369





DSCN-371





DSCN-373





DSCN-375





DSCN-377





DSCN-379



DSCN-380



DSCN-381





DSCN-383





DSCN-385



DSCN-386



DSCN-387



DSCN-388



DSCN-389





DSCN-391





DSCN-393





DSCN-395





DSCN-397





DSCN-399





DSCN-401



DSCN-402



DSCN-403





DSCN-405





DSCN-407





DSCN-409





DSCN-411





DSCN-413





DSCN-415





DSCN-417





DSCN-419





DSCN-421





DSCN-423





DSCN-425





DSCN-427





DSCN-429





DSCN-431





DSCN-433





DSCN-435





DSCN-437





DSCN-439





DSCN-441





DSCN-443





DSCN-445





DSCN-447



DSCN-448



DSCN-449





DSCN-451



DSCN-452



DSCN-453





DSCN-455



DSCN-456



DSCN-457



DSCN-458



DSCN-459





DSCN-461





DSCN-463





DSCN-465





DSCN-467





DSCN-469





DSCN-471





DSCN0001





DSCN0003





DSCN0005





DSCN0007





DSCN0009





DSCN0011





DSCN0013





DSCN0015





DSCN0017





DSCN0019





DSCN0021





DSCN0023





DSCN0025





DSCN0027





DSCN0029





DSCN0031





DSCN0033





DSCN0035





DSCN0037





DSCN0039





DSCN0041





DSCN0043





DSCN0045





DSCN0047





DSCN0049





DSCN0051





DSCN0053





DSCN0055





DSCN0057





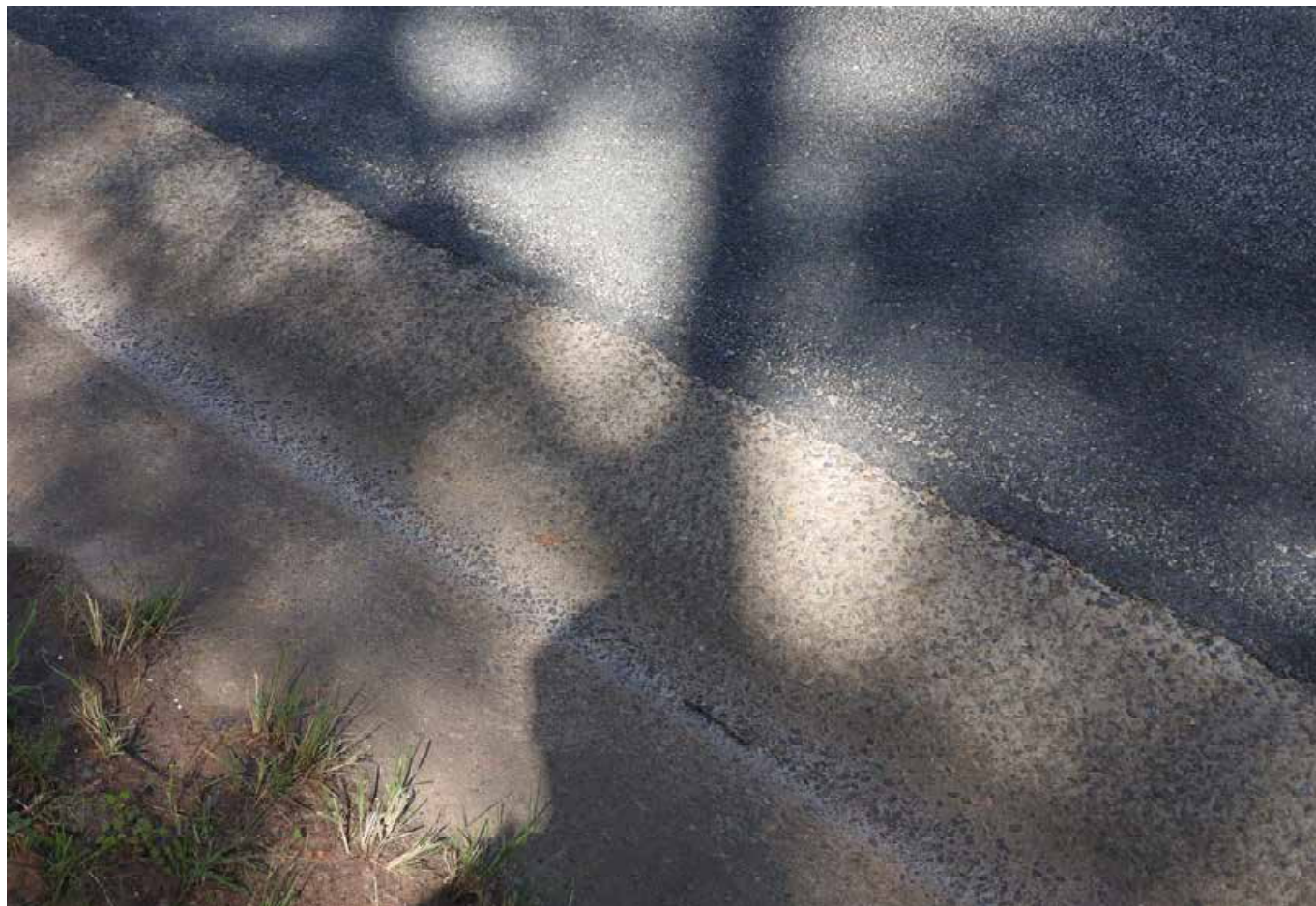
DSCN0059





DSCN0061





DSCN0063





DSCN0065





DSCN0067





DSCN0069





DSCN0071





DSCN0073





DSCN0075





DSCN0077





DSCN0079





DSCN0081





DSCN0083





DSCN0085





DSCN0087





DSCN0089



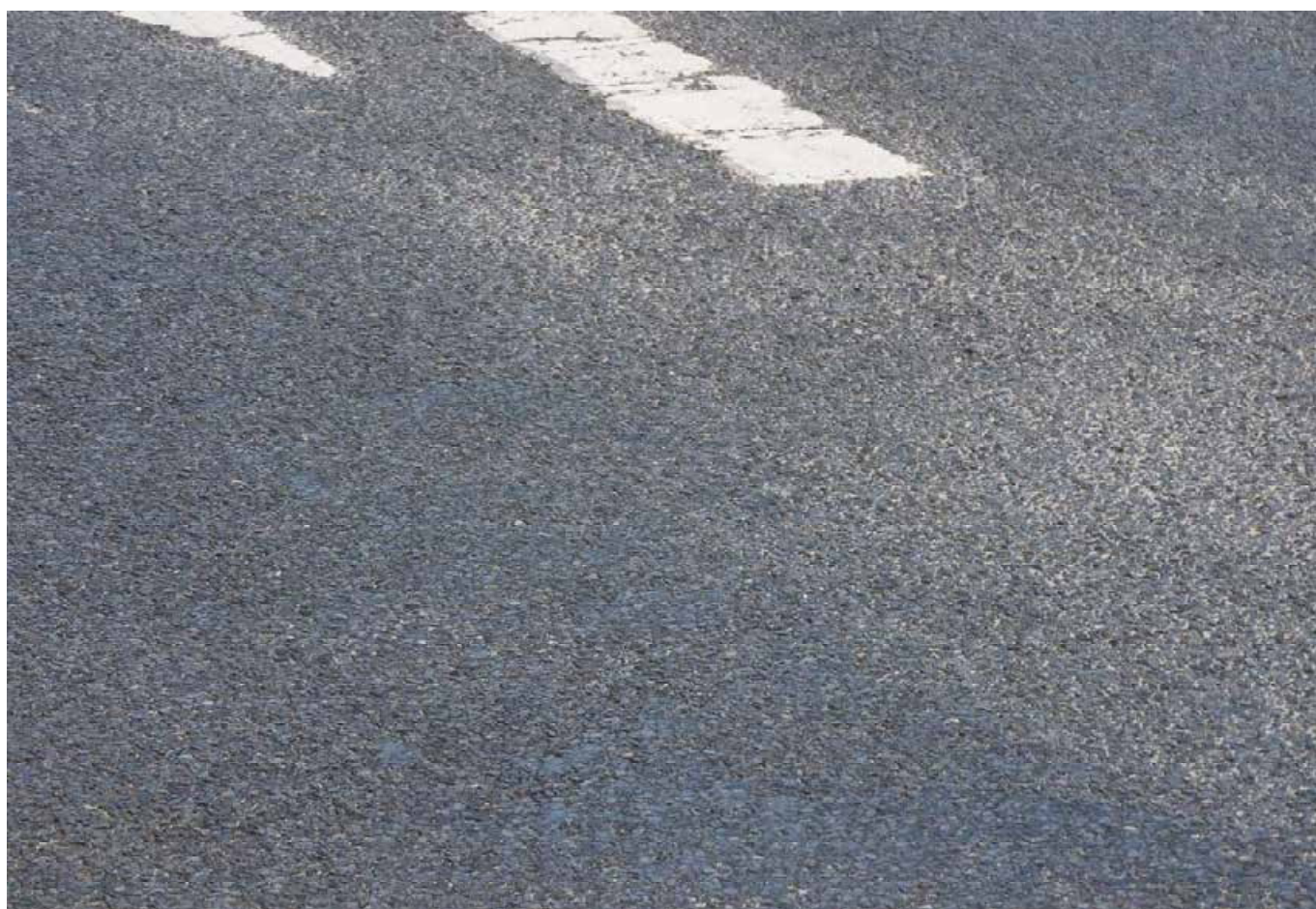


DSCN0091



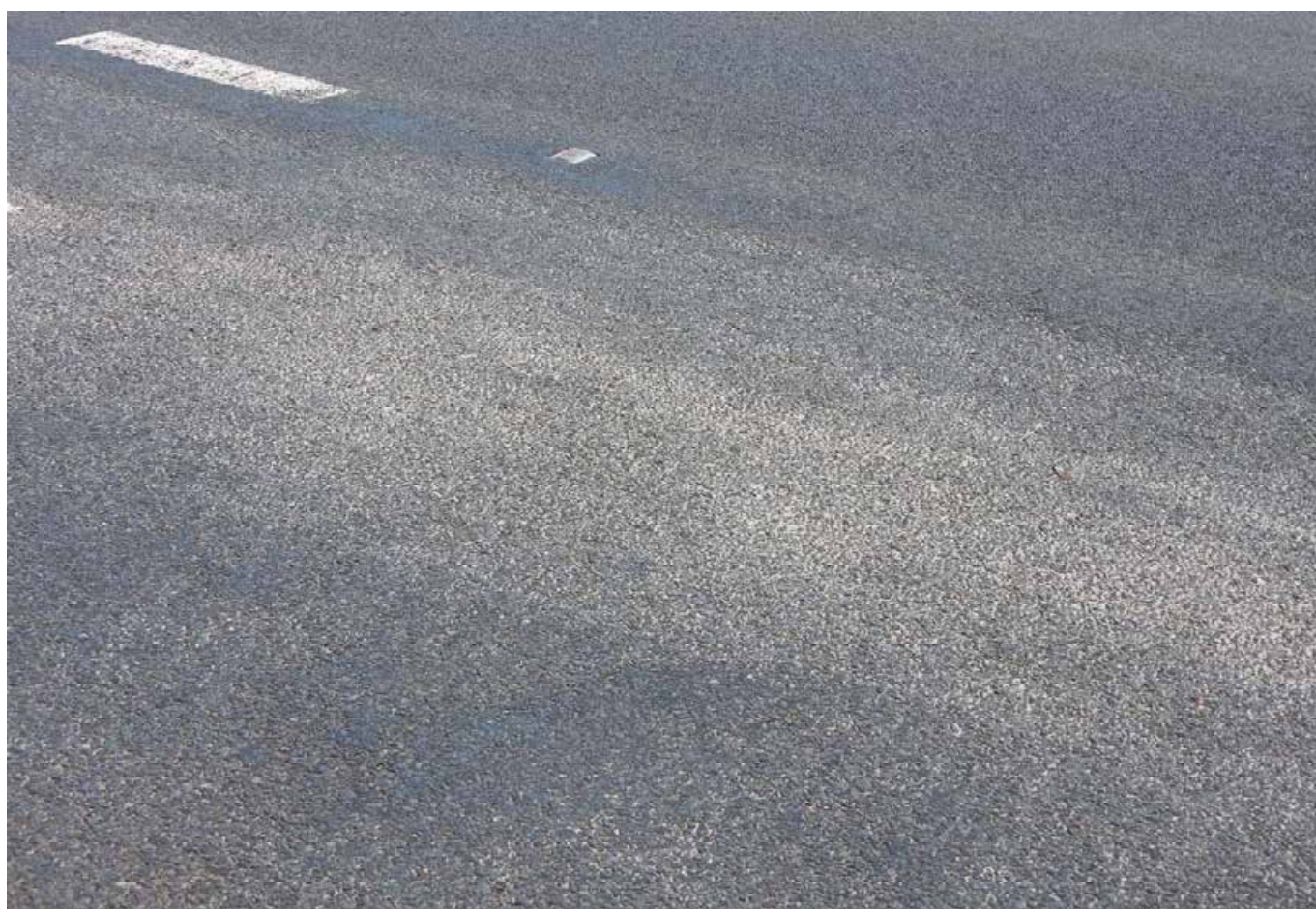


DSCN0093





DSCN0095





DSCN0097





DSCN0099





DSCN0101





DSCN0103





DSCN0105





DSCN0107





DSCN0109





DSCN0111





DSCN0113





DSCN0115





DSCN0117





DSCN0119





DSCN0121





DSCN0123





DSCN0125





DSCN0127





DSCN0129





DSCN0131





DSCN0133





DSCN0135





DSCN0137





DSCN0139





DSCN0141





DSCN0143





DSCN0145





DSCN0147





DSCN0149





DSCN0151





DSCN0153





DSCN0155





DSCN0157





DSCN0159





DSCN0161





DSCN0163





DSCN0165





DSCN0167





DSCN0169





DSCN0171





DSCN0173





DSCN0175





DSCN0177





DSCN0179





DSCN0181





DSCN0183





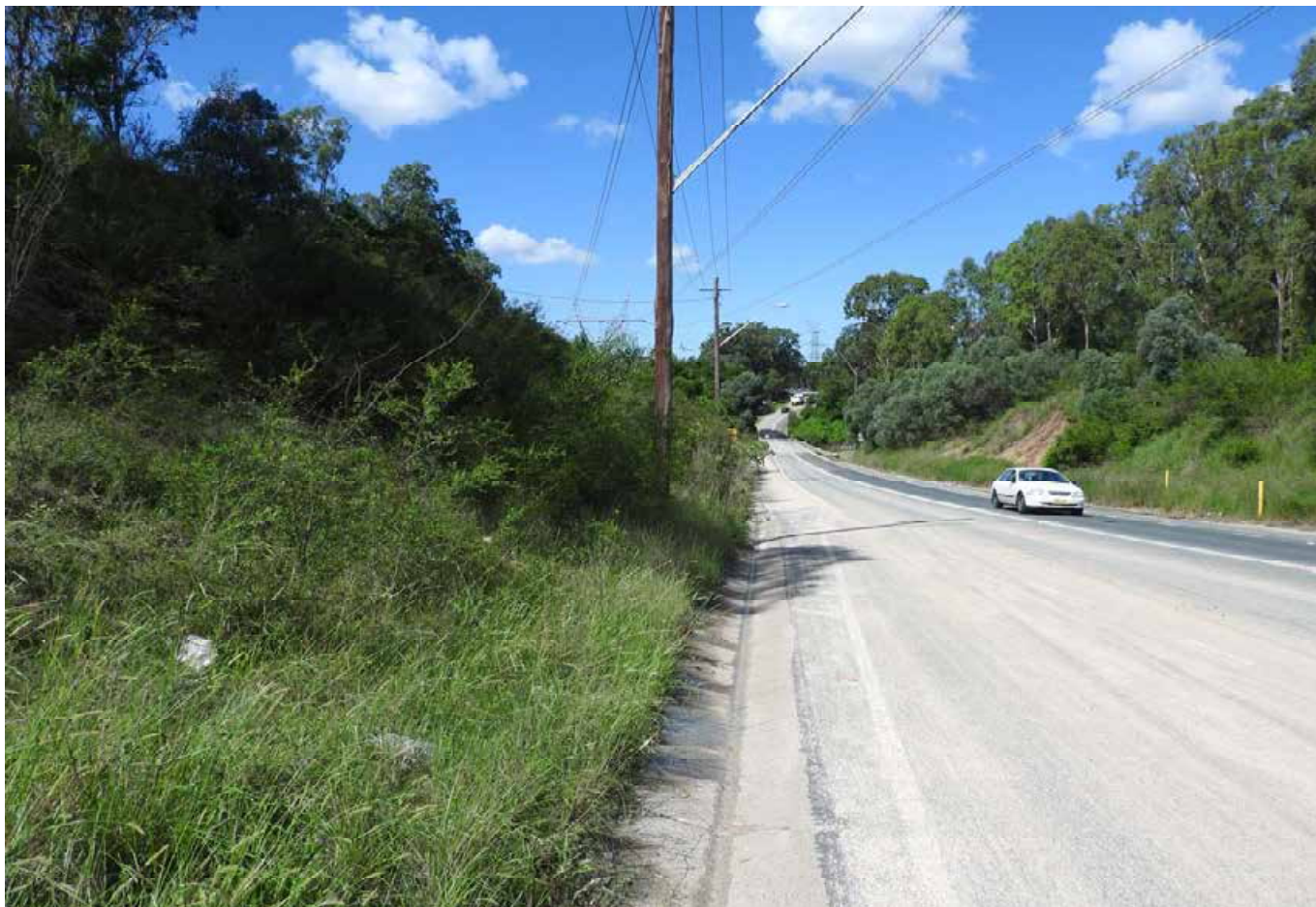
DSCN0185





DSCN0187





DSCN0189





DSCN0191





DSCN0193





DSCN0195





DSCN0197





DSCN0199





DSCN0201





DSCN0203





DSCN0205





DSCN0207





DSCN0209





DSCN0211





DSCN0213





DSCN0215





DSCN0217





DSCN0219





DSCN0221





DSCN0223





DSCN0225





DSCN0227





DSCN0229





DSCN0231





DSCN0233





DSCN0235





DSCN0237





DSCN0239





DSCN0241





DSCN0243





DSCN0245





DSCN0247





DSCN0249





DSCN0251