

# Moorebank Precinct East Stage 2 Proposal Response to Submissions

## Appendix D: Noise Contours



**SIMTA**

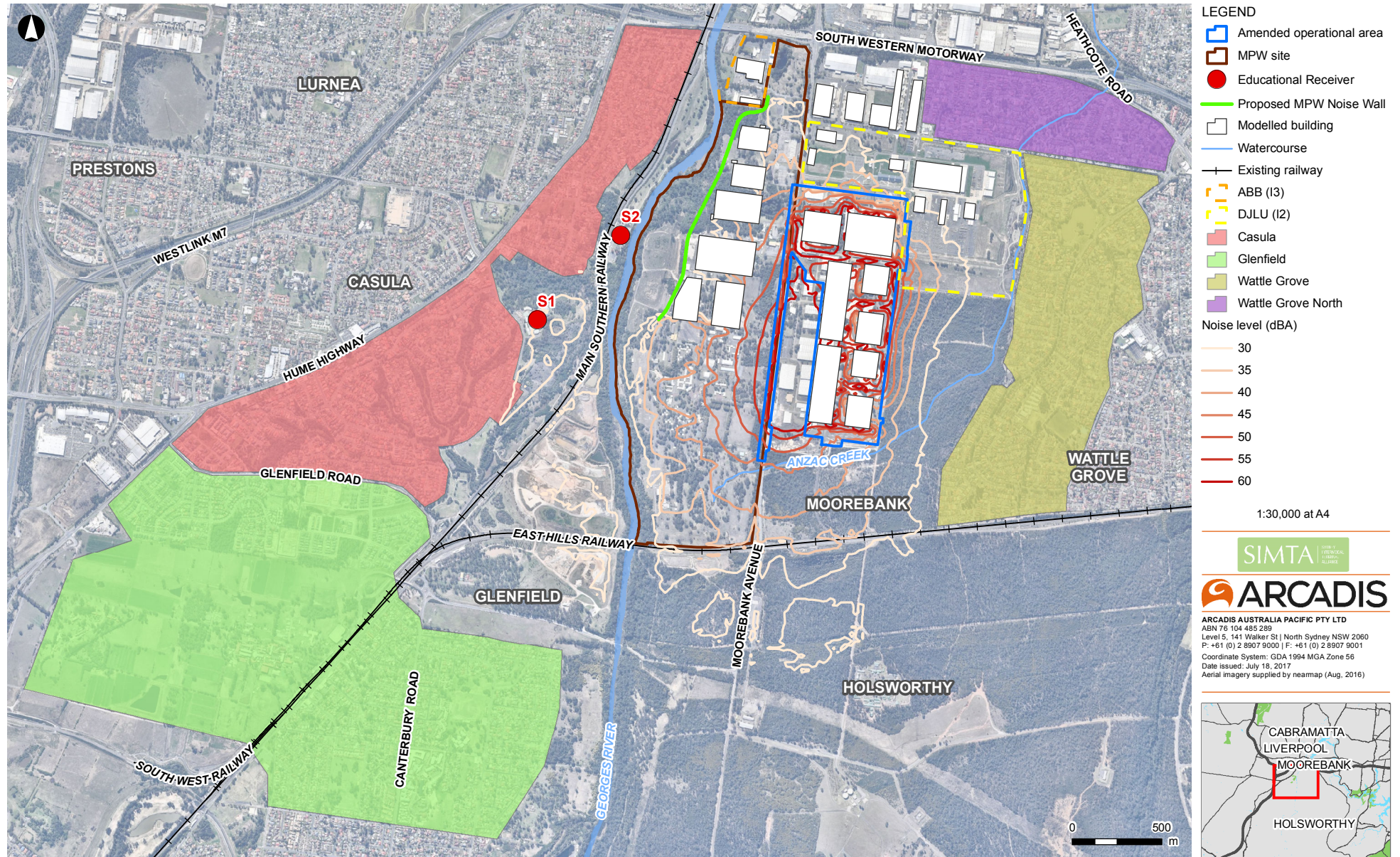
SYDNEY INTERMODAL TERMINAL ALLIANCE

Part 4, Division 4.1, State Significant  
Development





## MPE Stage 2 EIS Response to Submissions

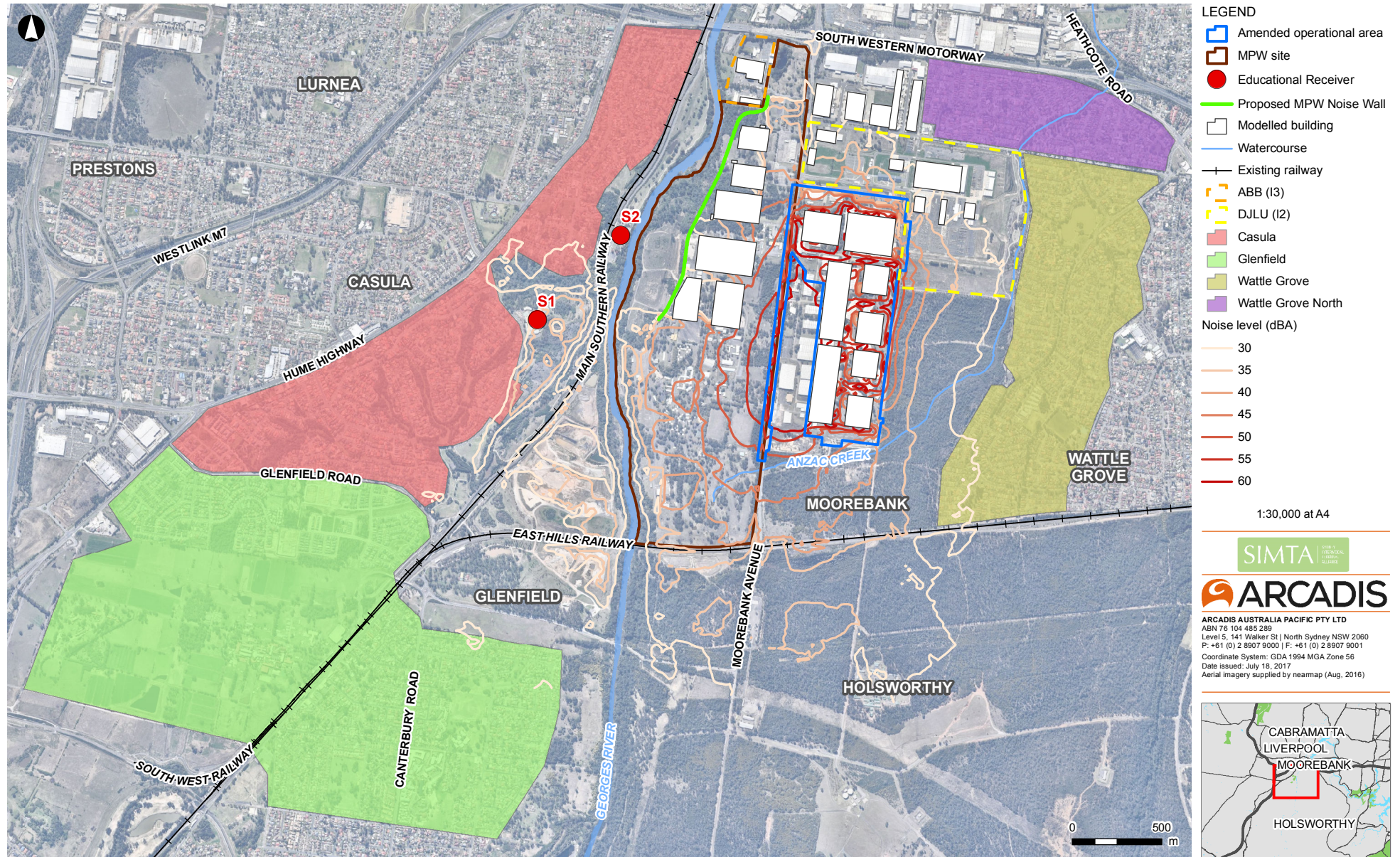


D1 - Noise contours LAeq, 15min Noise level (dBA) at night during calm weather conditions





## MPE Stage 2 EIS Response to Submissions



D2 - Noise contours LAeq, 15min Noise level (dBA) at night during adverse weather conditions

