

# Moorebank Precinct East Stage 2 Proposal Response to Submissions

## Appendix E1: Revised Civil and Drainage Design Drawings



**SIMTA**

**SYDNEY INTERMODAL TERMINAL ALLIANCE**

Part 4, Division 4.1, State Significant  
Development



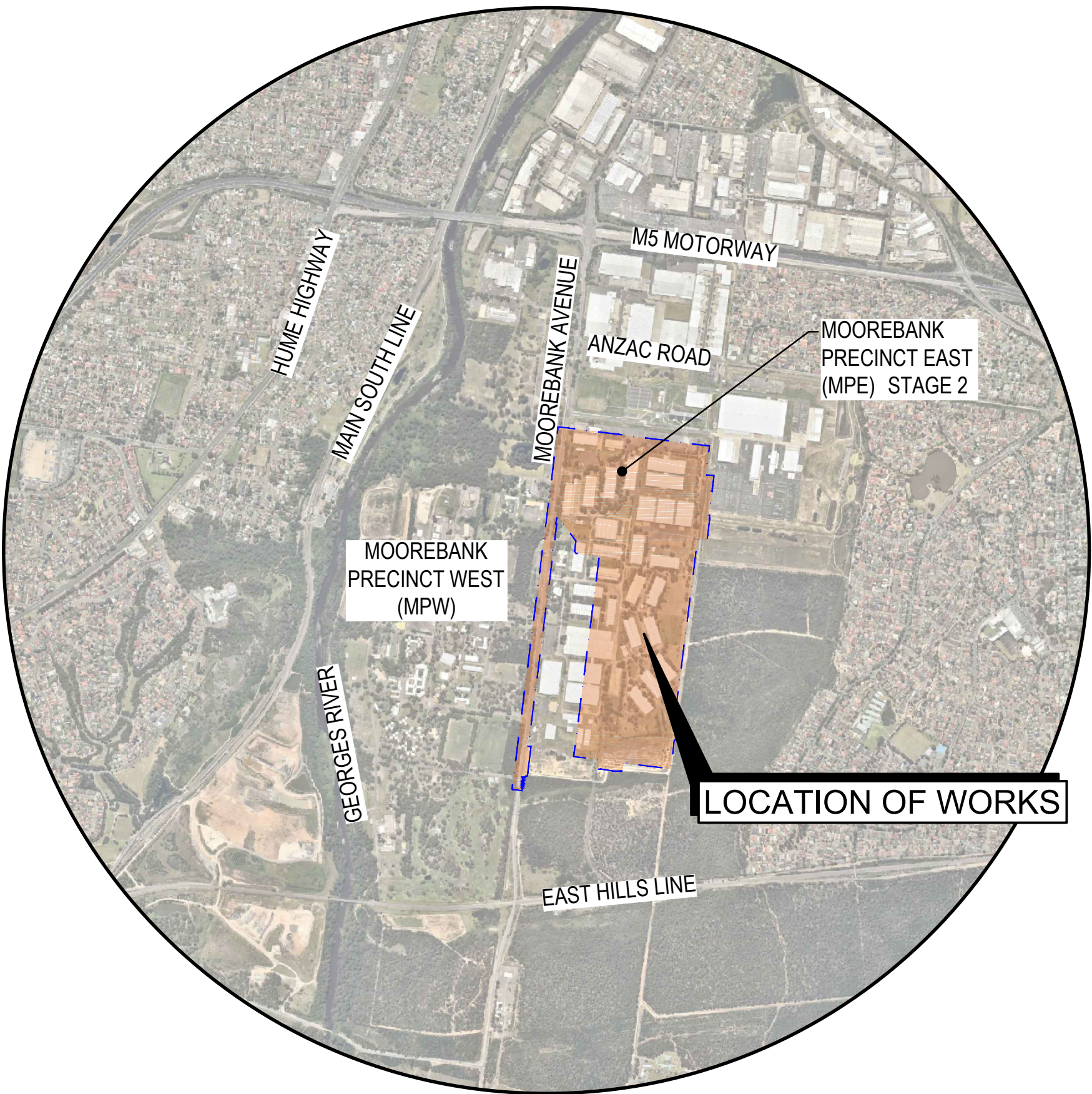
MOOREBANK PRECINCT EAST (MPE) STAGE 2

STATE SIGNIFICANT DEVELOPMENT APPLICATION - RESPONSE TO SUBMISSIONS

CIVIL WORKS

DRAWING LIST  
GENERAL

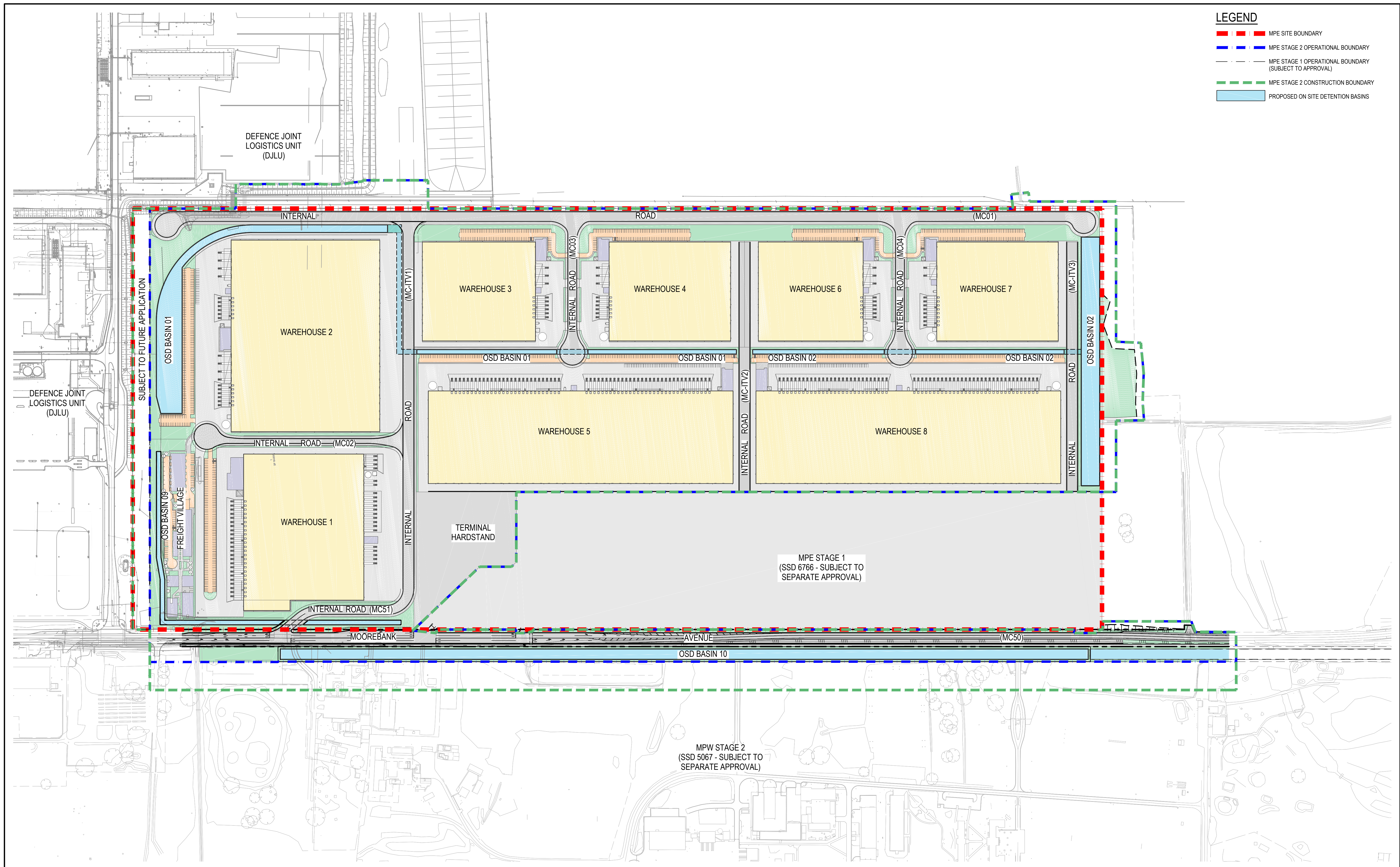
SSS2-ARC-CV-DWG-0001	COVER SHEET AND DRAWING LIST
SSS2-ARC-CV-DWG-0002	GENERAL ARRANGEMENT PLAN
SSS2-ARC-CV-DWG-0003	TYPICAL ROAD CROSS SECTIONS
SITE PREPARATION	
SSS2-ARC-CV-DWG-0101	EROSION AND SEDIMENT CONTROL PLAN
SSS2-ARC-CV-DWG-0111	BULK EARTHWORKS PLAN
SSS2-ARC-CV-DWG-0121	SITE SECTIONS SHEET 1
SSS2-ARC-CV-DWG-0122	SITE SECTIONS SHEET 2
CIVIL WORKS	
SSS2-ARC-CV-DWG-0201	CIVIL AND STORMWATER PLAN SHEET 1
SSS2-ARC-CV-DWG-0202	CIVIL AND STORMWATER PLAN SHEET 2
SSS2-ARC-CV-DWG-0203	CIVIL AND STORMWATER PLAN SHEET 3
SSS2-ARC-CV-DWG-0204	CIVIL AND STORMWATER PLAN SHEET 4
SSS2-ARC-CV-DWG-0205	CIVIL AND STORMWATER PLAN SHEET 5
SSS2-ARC-CV-DWG-0206	CIVIL AND STORMWATER PLAN SHEET 6
SSS2-ARC-CV-DWG-0211	ROAD LONGITUDINAL SECTIONS SHEET 1
SSS2-ARC-CV-DWG-0212	ROAD LONGITUDINAL SECTIONS SHEET 2
SSS2-ARC-CV-DWG-0213	ROAD LONGITUDINAL SECTIONS SHEET 3
SSS2-ARC-CV-DWG-0214	ROAD LONGITUDINAL SECTIONS SHEET 4
SSS2-ARC-CV-DWG-0215	ROAD LONGITUDINAL SECTIONS SHEET 5
SSS2-ARC-CV-DWG-0216	ROAD LONGITUDINAL SECTIONS SHEET 6
STORMWATER DRAINAGE	
SSS2-ARC-CV-DWG-0411	STORMWATER DRAINAGE BASIN OUTLET 1
SSS2-ARC-CV-DWG-0412	STORMWATER DRAINAGE BASIN OUTLET 2
SSS2-ARC-CV-DWG-0413	STORMWATER DRAINAGE BASIN OUTLET 9
SSS2-ARC-CV-DWG-0414	STORMWATER DRAINAGE BASIN OUTLET 10
SSS2-ARC-CV-DWG-0431	EXISTING CATCHMENT PLAN
SSS2-ARC-CV-DWG-0432	PROPOSED CATCHMENT PLAN



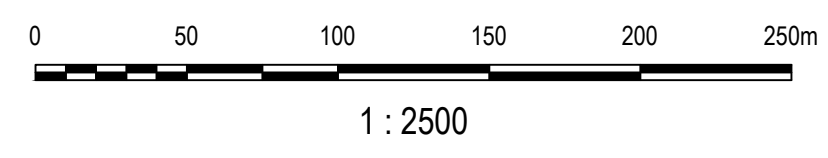
LOCALITY PLAN  
1 : 20,000

**DISCLAIMER**  
THIS MAP HAS BEEN PREPARED USING nearmap.com IMAGERY. THIS DATA IS NOT GUARANTEED TO BE FREE FROM ERROR OR OMISSION. THEREFORE ARCADIS AND ITS EMPLOYEES DISCLAIM LIABILITY OF ANY ACT DONE OR OMISSION MADE ON THE INFORMATION CONTAINED IN THIS DATA AND ANY CONSEQUENCES OF SUCH ACTS OR OMISSIONS. THIS DRAWING IS PROVIDED FOR THE INFORMATION OF THE PERSON OR ORGANISATION TO WHOM ARCADIS PROVIDES IT. IT MAY NOT BE PROVIDED TO, OR USED BY, ANY OTHER PERSON WITHOUT ARCADIS PRIOR WRITTEN CONSENT.





Issue	Description	Date
04	ISSUE FOR SSD APPLICATION (RESPONSE TO SUBMISSIONS)	26/06/2017
03	ISSUE FOR SSD APPLICATION INCORPORATING CLIENT COMMENTS	28/10/2016
02	ISSUE FOR SSD APPLICATION	19/10/2016
01	DRAFT ISSUE FOR SSD APPLICATION	16/09/2016



Client

**SIMTA** SYDNEY INTERMODAL TERMINAL ALLIANCE

**TACTICAL** GROUP

Status	PRELIMINARY ONLY NOT TO BE USED FOR CONSTRUCTION	
Scales	1 : 2500	Current Issue Signatures
Original Size	A1	Drawn J.WOOD
Height Datum	AHD	Designed J.WOOD
Grid	MGA	Checked K.MCAREAVEY
Filename:	SSS2-ARC-CV-DWG-0002-GeneralArrangementPlan.dwg	

Project

MOOREBANK PRECINCT EAST (MPE) STAGE 2

Title

GENERAL ARRANGEMENT PLAN

**ARCADIS**

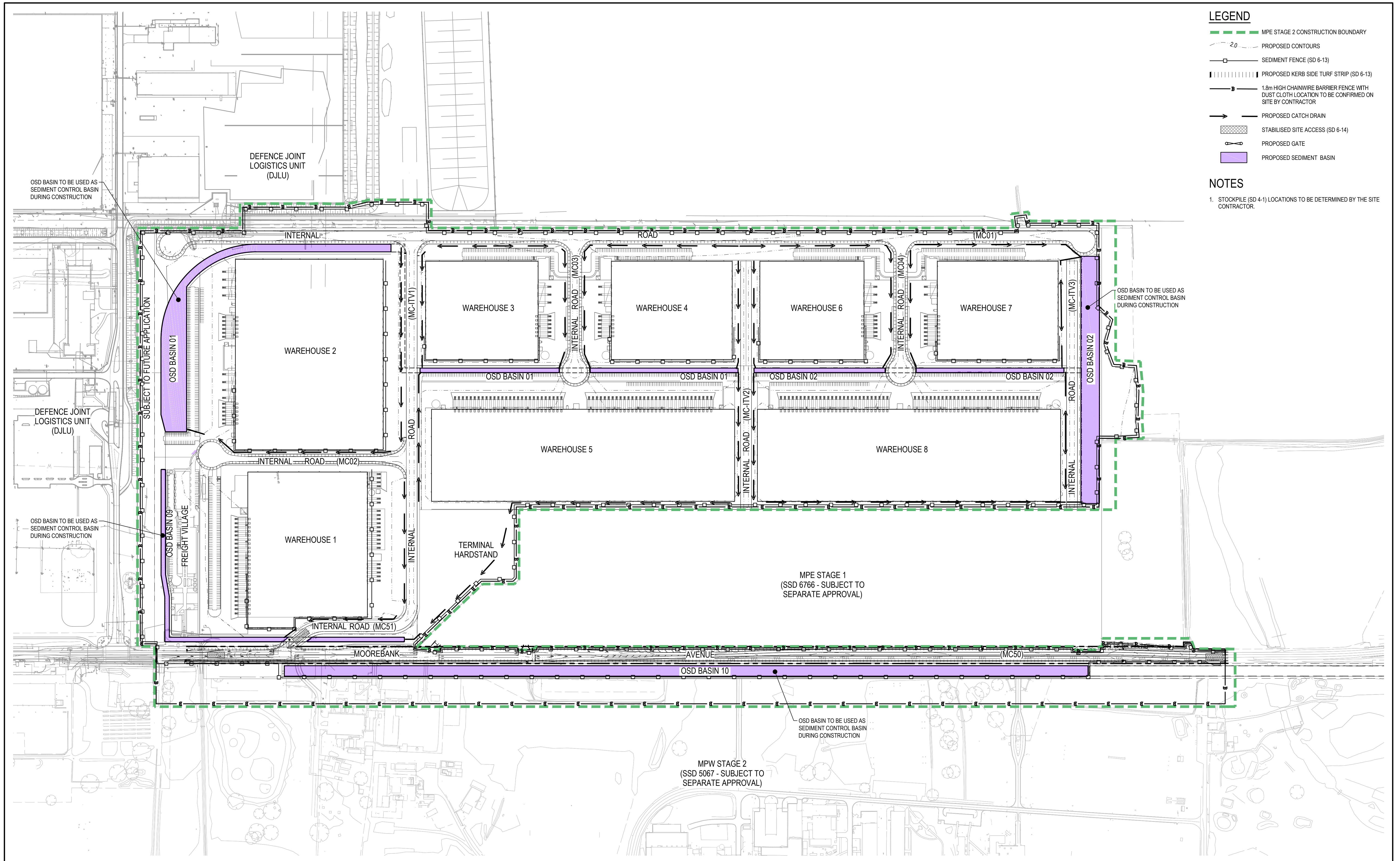
Arcadis Australia Pacific Pty Limited  
Level 5, 141 Walker St  
NORTH SYDNEY NSW 2060  
ABN 76 104 485 289  
Tel No: +61 2 8907 9000  
Fax No: +61 2 8907 9001  
arcadis.com

Project No.  
AA009335

Drawing No.  
SSS2-ARC-CV-DWG-0002- 04

Issue





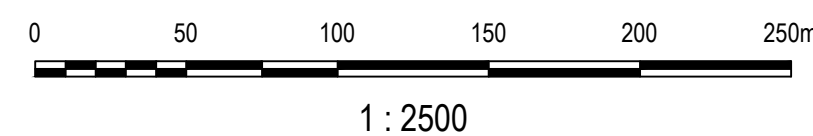
LEGEND

- MPE STAGE 2 CONSTRUCTION BOUNDARY
- PROPOSED CONTOURS
- SEDIMENT FENCE (SD 6-13)
- PROPOSED KERB SIDE TURF STRIP (SD 6-13)
- 1.8m HIGH CHAINWIRE BARRIER FENCE WITH DUST CLOTH LOCATION TO BE CONFIRMED ON SITE BY CONTRACTOR
- PROPOSED CATCH DRAIN
- STABILISED SITE ACCESS (SD 6-14)
- PROPOSED GATE
- PROPOSED SEDIMENT BASIN

NOTES

- STOCKPILE (SD 4-1) LOCATIONS TO BE DETERMINED BY THE SITE CONTRACTOR.

Issue	Description	Date
04	ISSUE FOR SSD APPLICATION (RESPONSE TO SUBMISSIONS)	26/06/2017
03	ISSUE FOR SSD APPLICATION INCORPORATING CLIENT COMMENTS	28/10/2016
02	ISSUE FOR SSD APPLICATION	19/10/2016
01	DRAFT ISSUE FOR SSD APPLICATION	16/09/2016



Status PRELIMINARY ONLY NOT TO BE USED FOR CONSTRUCTION	
Scales	1 : 2500
Original Size	A1
Height Datum	AHD
Grid	MGA
Filename: SSS2-ARC-CV-DWG-0101-ErosionAndSedimentControlPlan.dwg	

Project MOOREBANK PRECINCT EAST (MPE) STAGE 2	
Title EROSION AND SEDIMENT CONTROL PLAN	

**ARCADIS**  
Arcadis Australia Pacific Pty Limited  
Level 5, 141 Walker St  
NORTH SYDNEY NSW 2060  
ABN 76 104 485 289  
Tel No: +61 2 8907 9000  
Fax No: +61 2 8907 9001  
arcadis.com

Project No.  
AA009335

Drawing No.  
SSS2-ARC-CV-DWG-0101-04

Issue